

Department = Music

Number of Sections Summarized

Statistics(a)

Number of Sections Summarized

N	Valid	72
	Missing	0
Mean		1.33
Median		1.00
Mode		1
Std. Deviation		.475
Minimum		1
Maximum		2

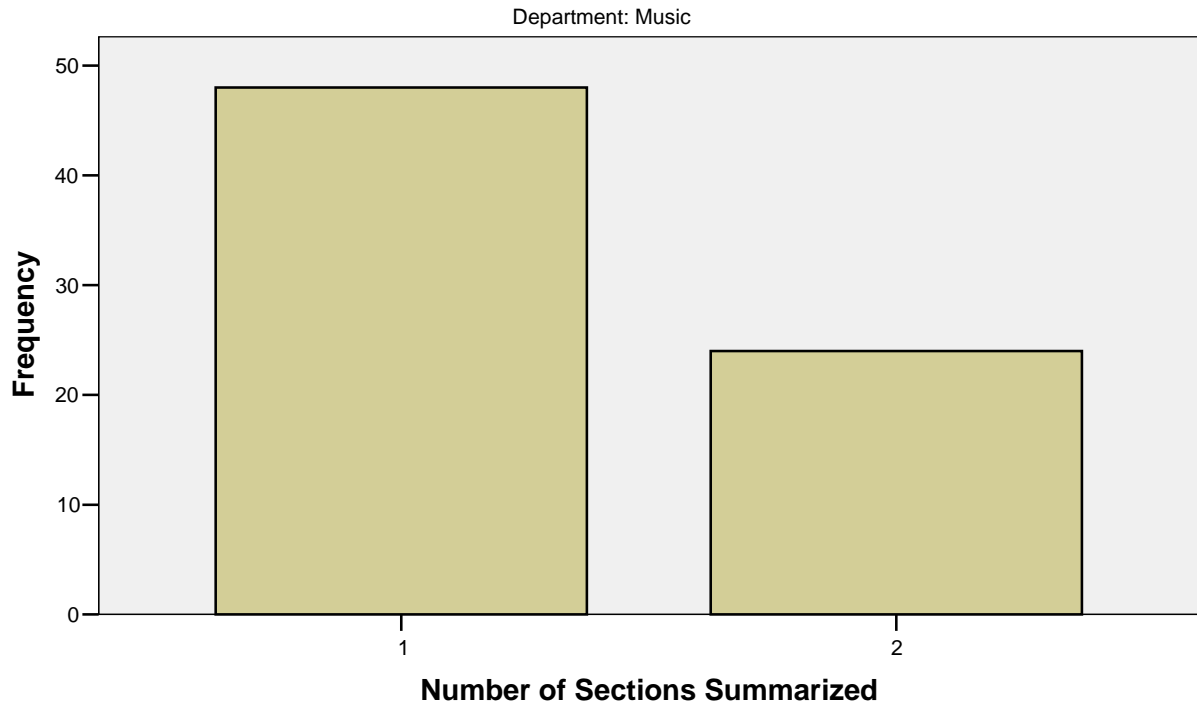
a Department = Music

Number of Sections Summarized(a)

	Frequency	Percent	Valid Percent	Cumulative Percent
Valid 1	48	66.7	66.7	66.7
2	24	33.3	33.3	100.0
Total	72	100.0	100.0	

a Department = Music

Number of Sections Summarized



Cases weighted by Number of Sections Summarized

Level of Course

Statistics(a)

Level of Course

N	Valid	69
	Missing	3
Mean		2.4928
Median		2.0000
Mode		2.00
Std. Deviation		1.05193
Minimum		1.00
Maximum		5.00

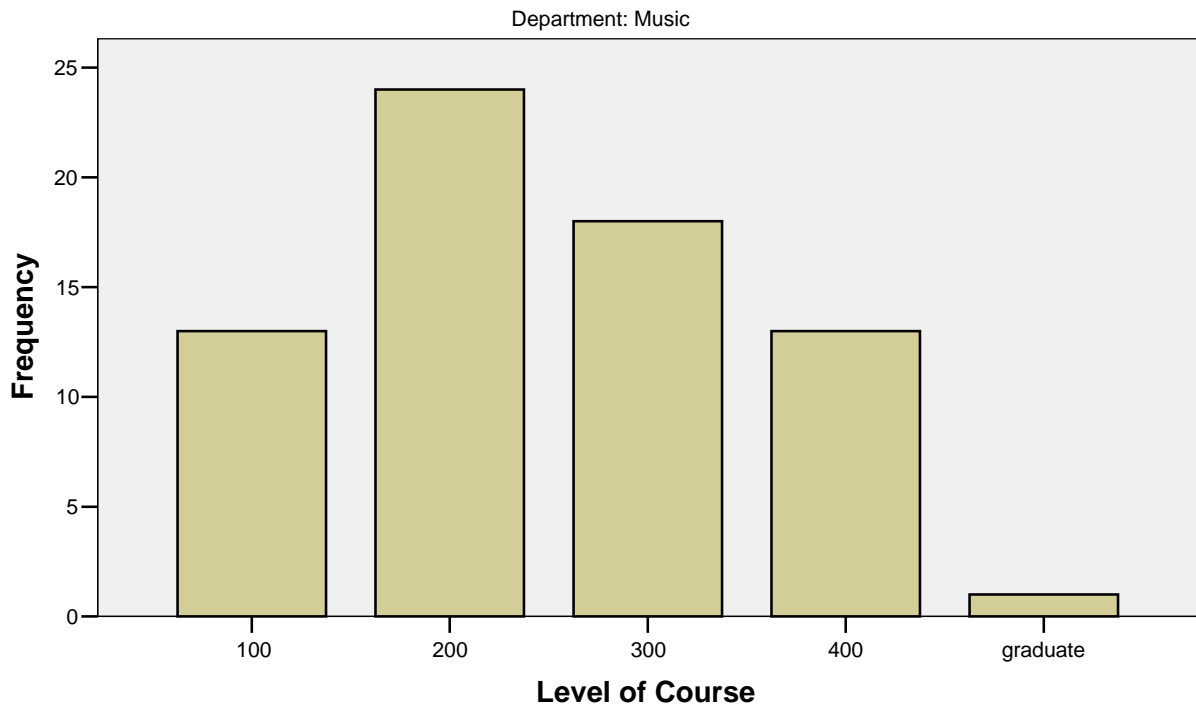
a Department = Music

Level of Course(a)

		Frequency	Percent	Valid Percent	Cumulative Percent
Valid	100	13	18.1	18.8	18.8
	200	24	33.3	34.8	53.6
	300	18	25.0	26.1	79.7
	400	13	18.1	18.8	98.6
	graduate	1	1.4	1.4	100.0
Total		69	95.8	100.0	
Missing	System	3	4.2		
Total		72	100.0		

a Department = Music

Level of Course



Cases weighted by Number of Sections Summarized

Class Section Enrollment

Statistics(a)

Class Section Enrollment

N	Valid	69
	Missing	3
Mean		1.9130
Median		1.0000
Mode		1.00
Std. Deviation		1.23359
Minimum		1.00
Maximum		5.00

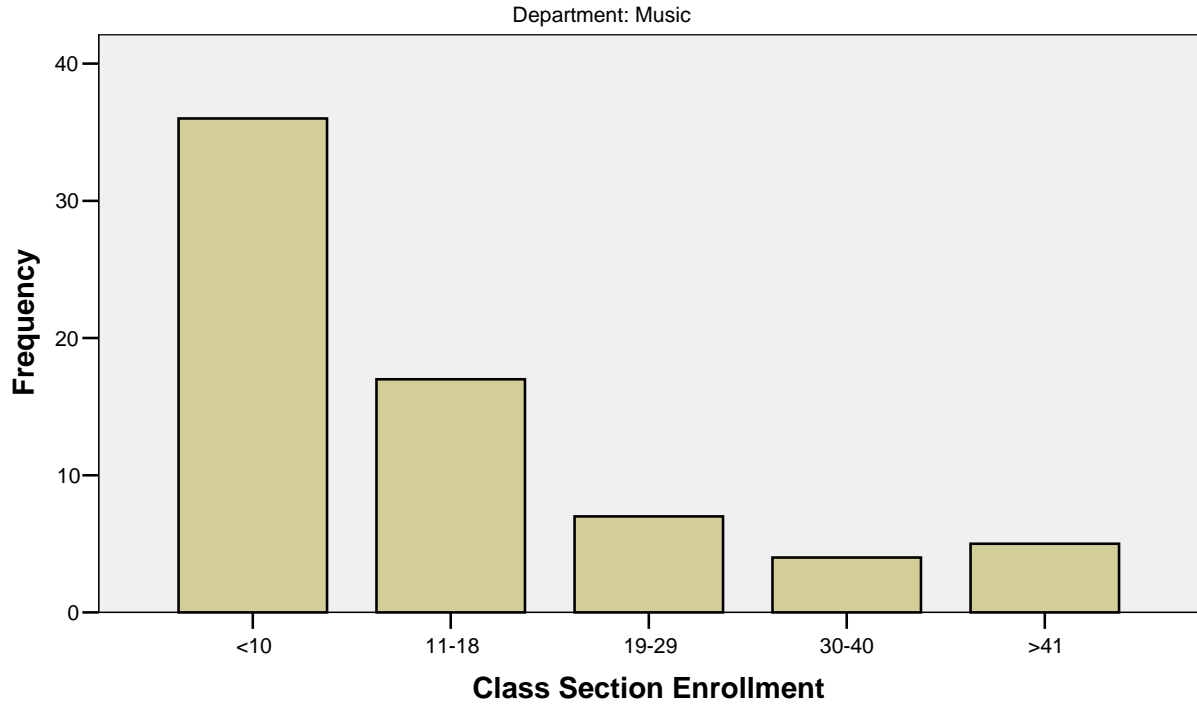
a Department = Music

Class Section Enrollment(a)

		Frequency	Percent	Valid Percent	Cumulative Percent
Valid	<10	36	50.0	52.2	52.2
	11-18	17	23.6	24.6	76.8
	19-29	7	9.7	10.1	87.0
	30-40	4	5.6	5.8	92.8
	>41	5	6.9	7.2	100.0
	Total	69	95.8	100.0	
Missing	System	3	4.2		
Total		72	100.0		

a Department = Music

Class Section Enrollment



Cases weighted by Number of Sections Summarized

Faculty Rank

Statistics(a)

Faculty Rank

N	Valid	69
	Missing	3
Mean		1.5362
Median		2.0000
Mode		2.00
Std. Deviation		.53081
Minimum		1.00
Maximum		3.00

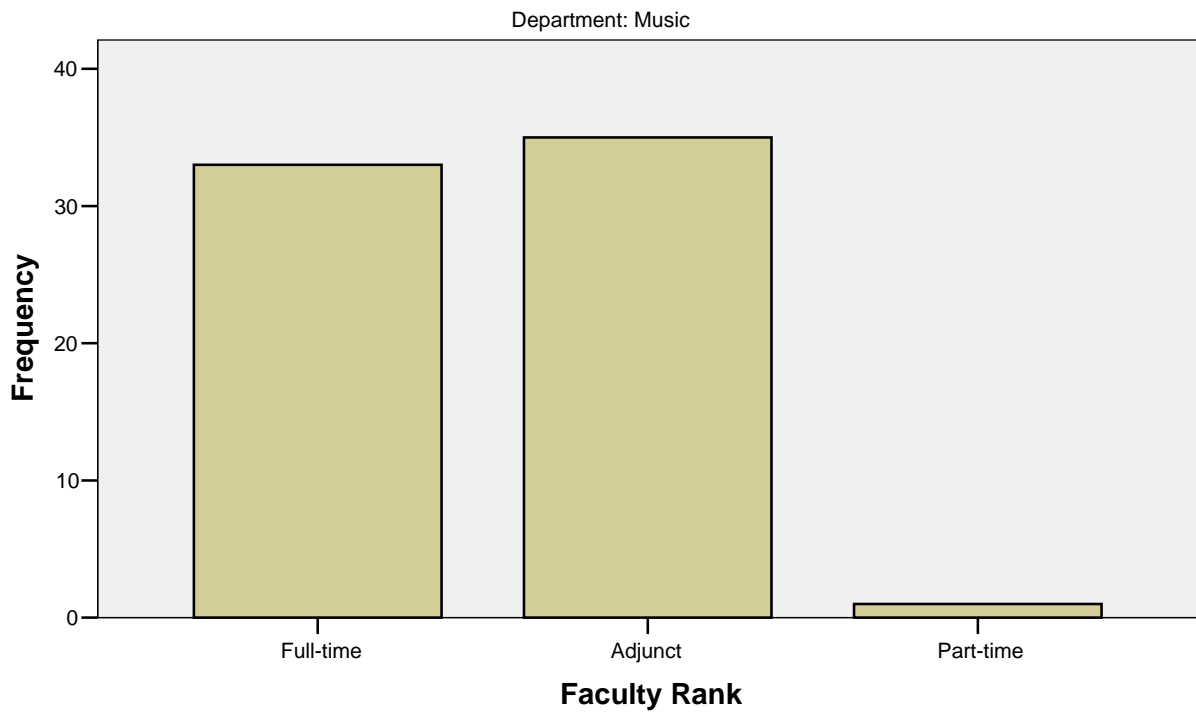
a Department = Music

Faculty Rank(a)

		Frequency	Percent	Valid Percent	Cumulative Percent
Valid	Full-time	33	45.8	47.8	47.8
	Adjunct	35	48.6	50.7	98.6
	Part-time	1	1.4	1.4	100.0
	Total	69	95.8	100.0	
Missing	System	3	4.2		
Total		72	100.0		

a Department = Music

Faculty Rank



Cases weighted by Number of Sections Summarized

Transformed Course

Statistics(a)

Transformed Course

N	Valid	72
	Missing	0
Mean		.00
Median		.00
Mode		0
Std. Deviation		.000
Minimum		0
Maximum		0

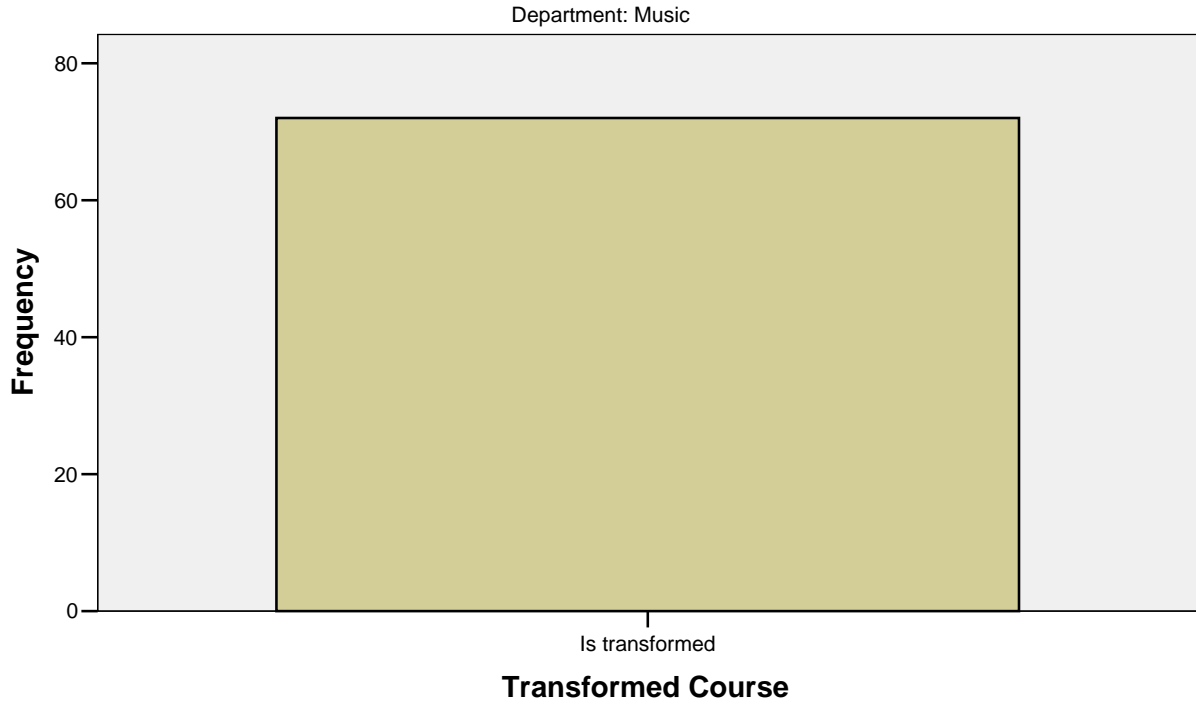
a Department = Music

Transformed Course(a)

	Frequency	Percent	Valid Percent	Cumulative Percent
Valid Is transformed	72	100.0	100.0	100.0

a Department = Music

Transformed Course



Cases weighted by Number of Sections Summarized

No Final

Statistics(a)

No Final

N	Valid	72
	Missing	0
Mean		.0833
Median		.0000
Mode		.00
Std. Deviation		.27832
Minimum		.00
Maximum		1.00

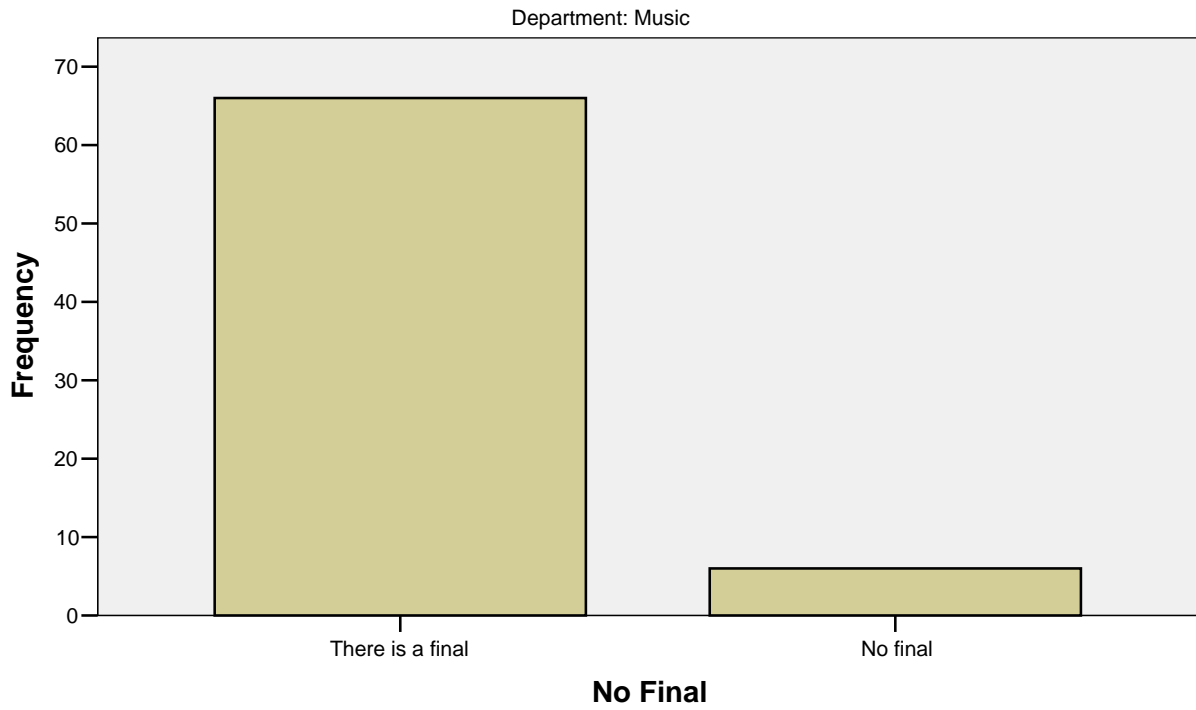
a Department = Music

No Final(a)

		Frequency	Percent	Valid Percent	Cumulative Percent
Valid	There is a final	66	91.7	91.7	91.7
	No final	6	8.3	8.3	100.0
	Total	72	100.0	100.0	

a Department = Music

No Final



Cases weighted by Number of Sections Summarized

Comprehensive Final Type

Statistics(a)

Comprehensive Final Type

N	Valid	58
	Missing	14
Mean		1.5172
Median		1.0000
Mode		1.00
Std. Deviation		.88340
Minimum		1.00
Maximum		3.00

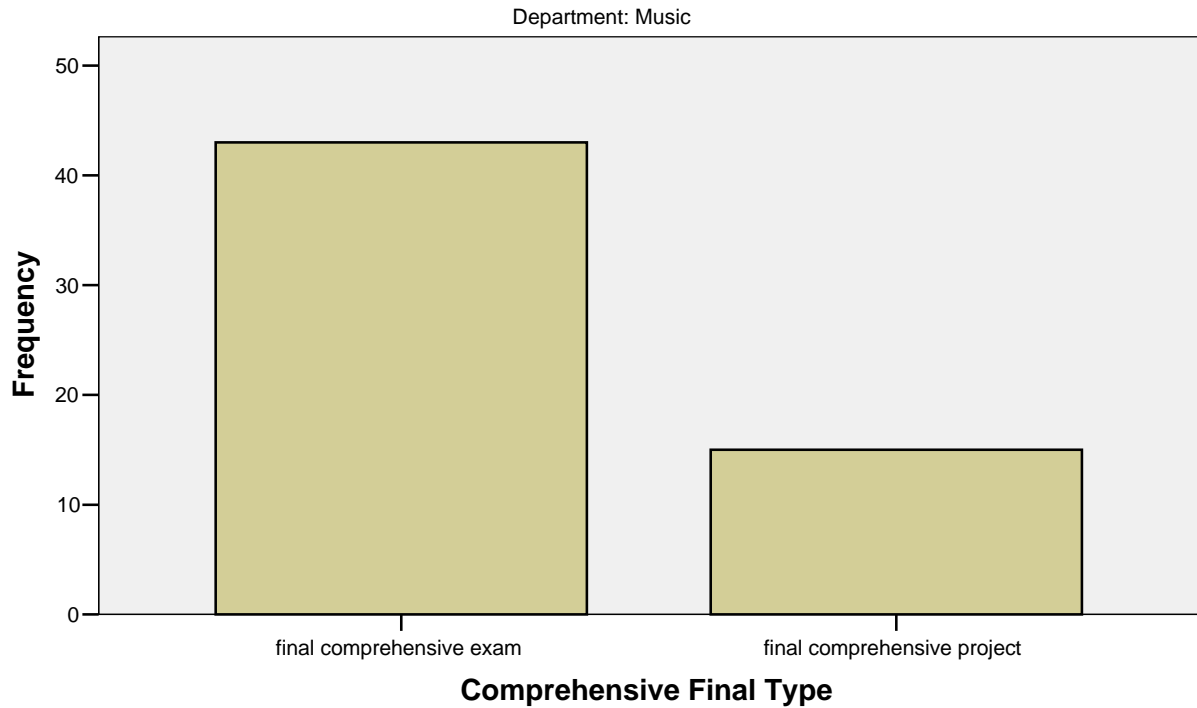
a Department = Music

Comprehensive Final Type(a)

		Frequency	Percent	Valid Percent	Cumulative Percent
Valid	final comprehensive exam	43	59.7	74.1	74.1
	final comprehensive project	15	20.8	25.9	100.0
	Total	58	80.6	100.0	
Missing	System	14	19.4		
Total		72	100.0		

a Department = Music

Comprehensive Final Type



Cases weighted by Number of Sections Summarized

Targeted Final Type

Statistics(a)

Targeted Final Type

N	Valid	8
	Missing	64
Mean		1.3750
Median		1.0000
Mode		1.00
Std. Deviation		.51755
Minimum		1.00
Maximum		2.00

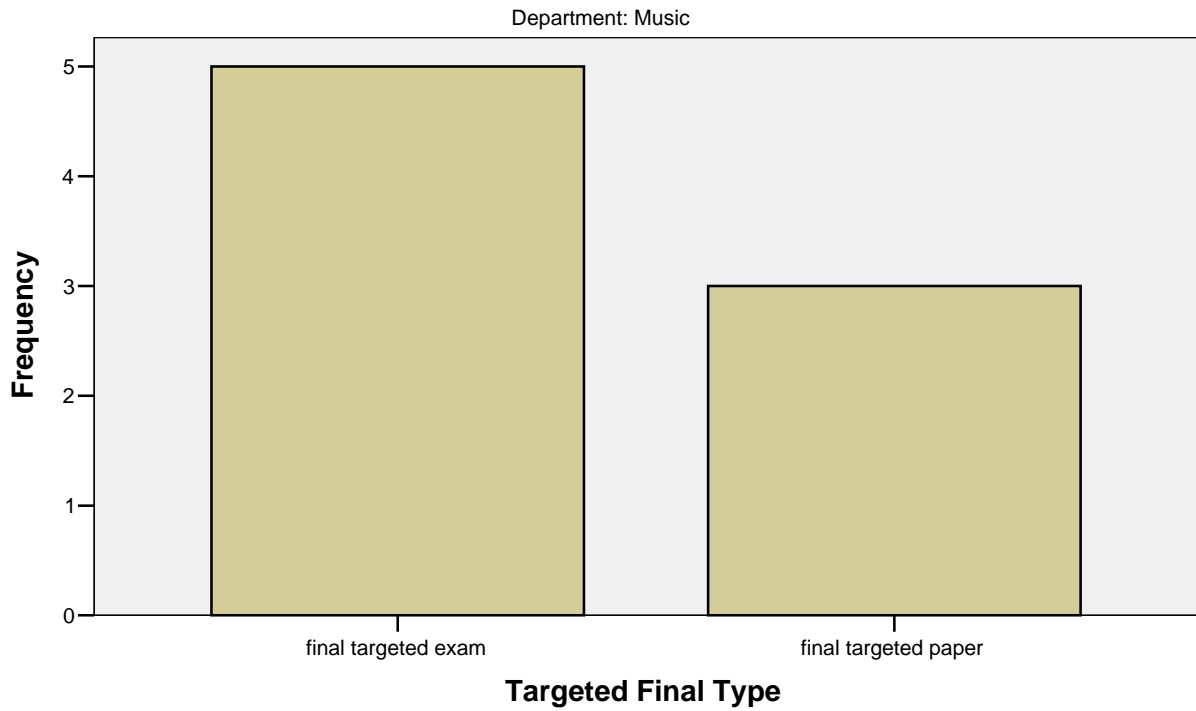
a Department = Music

Targeted Final Type(a)

		Frequency	Percent	Valid Percent	Cumulative Percent
Valid	final targeted exam	5	6.9	62.5	62.5
	final targeted paper	3	4.2	37.5	100.0
	Total	8	11.1	100.0	
Missing	System	64	88.9		
Total		72	100.0		

a Department = Music

Targeted Final Type



Cases weighted by Number of Sections Summarized

Final Assignment Type

Statistics(a)

Final Assignment Type

N	Valid	72
	Missing	0
Mean		1.9167
Median		1.0000
Mode		1.00
Std. Deviation		1.71776
Minimum		.00
Maximum		8.00

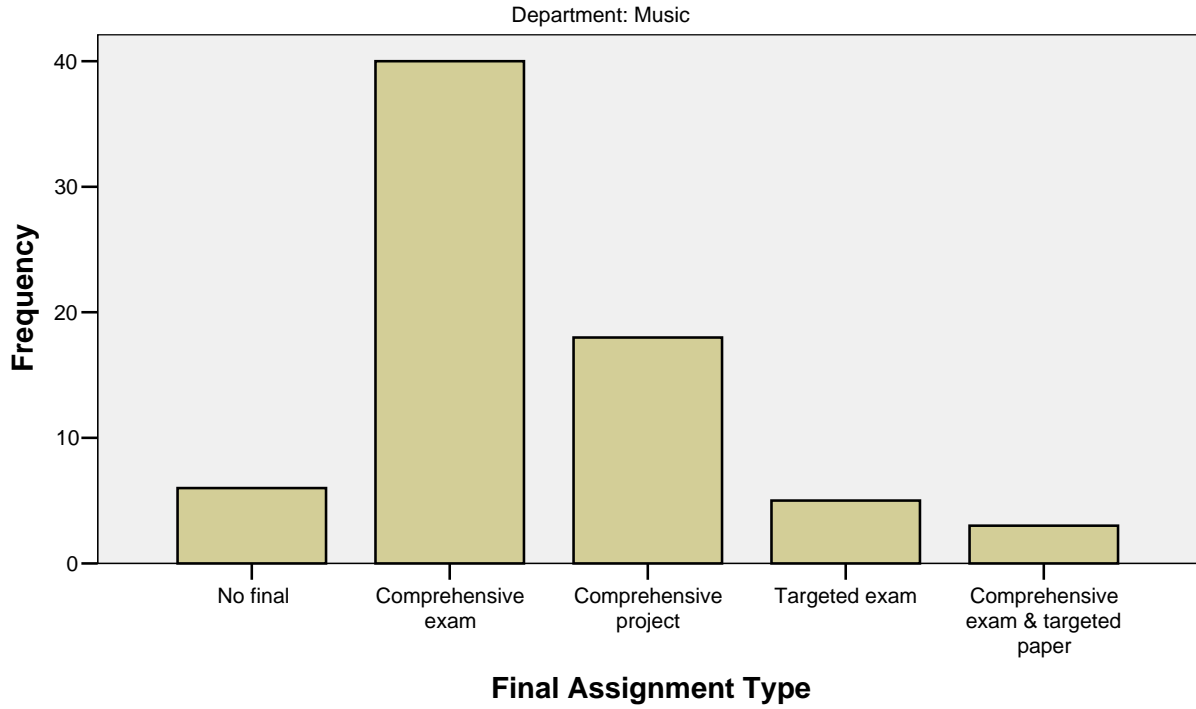
a Department = Music

Final Assignment Type(a)

		Frequency	Percent	Valid Percent	Cumulative Percent
Valid	No final	6	8.3	8.3	8.3
	Comprehensive exam	40	55.6	55.6	63.9
	Comprehensive project	18	25.0	25.0	88.9
	Targeted exam	5	6.9	6.9	95.8
	Comprehensive exam & targeted paper	3	4.2	4.2	100.0
	Total	72	100.0	100.0	

a Department = Music

Final Assignment Type



Cases weighted by Number of Sections Summarized

Final Assignment Due Date

Statistics(a)

Final Assignment Due Date

N	Valid	71
	Missing	1
Mean		2.4930
Median		2.0000
Mode		1.00
Std. Deviation		1.55722
Minimum		1.00
Maximum		5.00

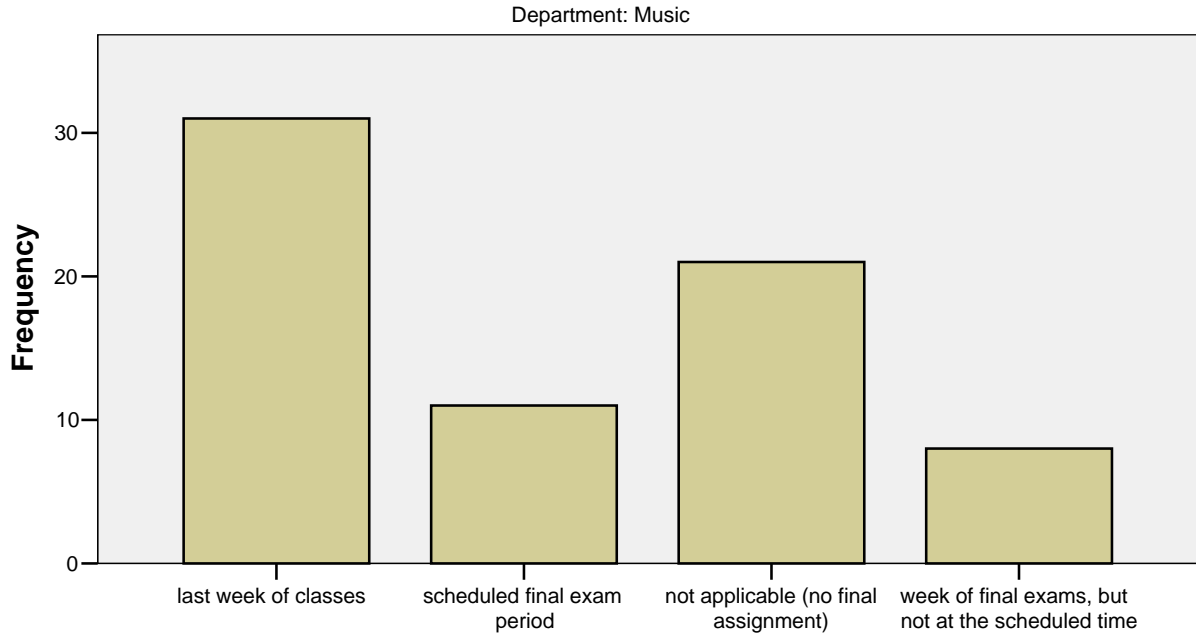
a Department = Music

Final Assignment Due Date(a)

		Frequency	Percent	Valid Percent	Cumulative Percent
Valid	last week of classes	31	43.1	43.7	43.7
	scheduled final exam period	11	15.3	15.5	59.2
	not applicable (no final assignment)	21	29.2	29.6	88.7
	week of final exams, but not at the scheduled time	8	11.1	11.3	100.0
	Total	71	98.6	100.0	
Missing	System	1	1.4		
	Total	72	100.0		

a Department = Music

Final Assignment Due Date



Final Assignment Due Date

Cases weighted by Number of Sections Summarized

Length of Final Exam Period Needed

Statistics(a)

Length of Final Exam Period Needed

N	Valid	15
	Missing	57
Mean		2.1000
Median		2.0000
Mode		3.00
Std. Deviation		.84937
Minimum		1.00
Maximum		3.00

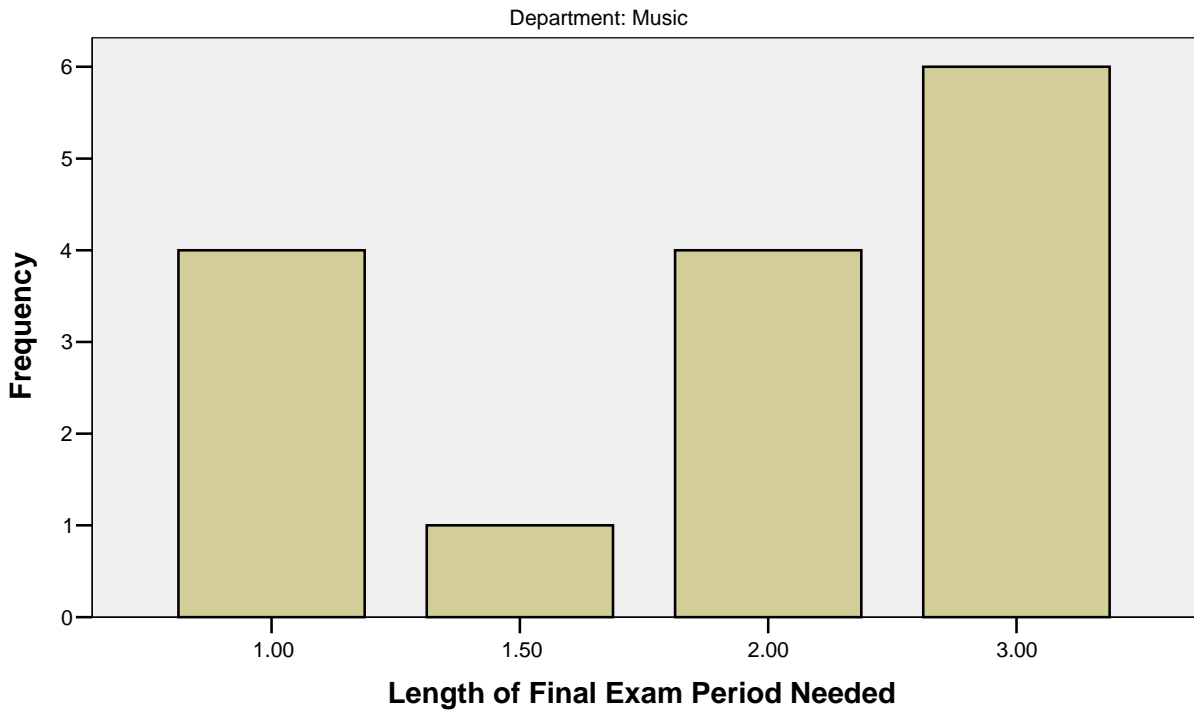
a Department = Music

Length of Final Exam Period Needed(a)

		Frequency	Percent	Valid Percent	Cumulative Percent
Valid	1.00	4	5.6	26.7	26.7
	1.50	1	1.4	6.7	33.3
	2.00	4	5.6	26.7	60.0
	3.00	6	8.3	40.0	100.0
	Total	15	20.8	100.0	
Missing	System	57	79.2		
Total		72	100.0		

a Department = Music

Length of Final Exam Period Needed



Cases weighted by Number of Sections Summarized

Length of Final Exam Period Needed (grouped)

Statistics(a)

Length of Final Exam Period Needed (grouped)

N	Valid	15
	Missing	57
Mean		2.0667
Median		2.0000
Mode		3.00
Std. Deviation		.88372
Minimum		1.00
Maximum		3.00

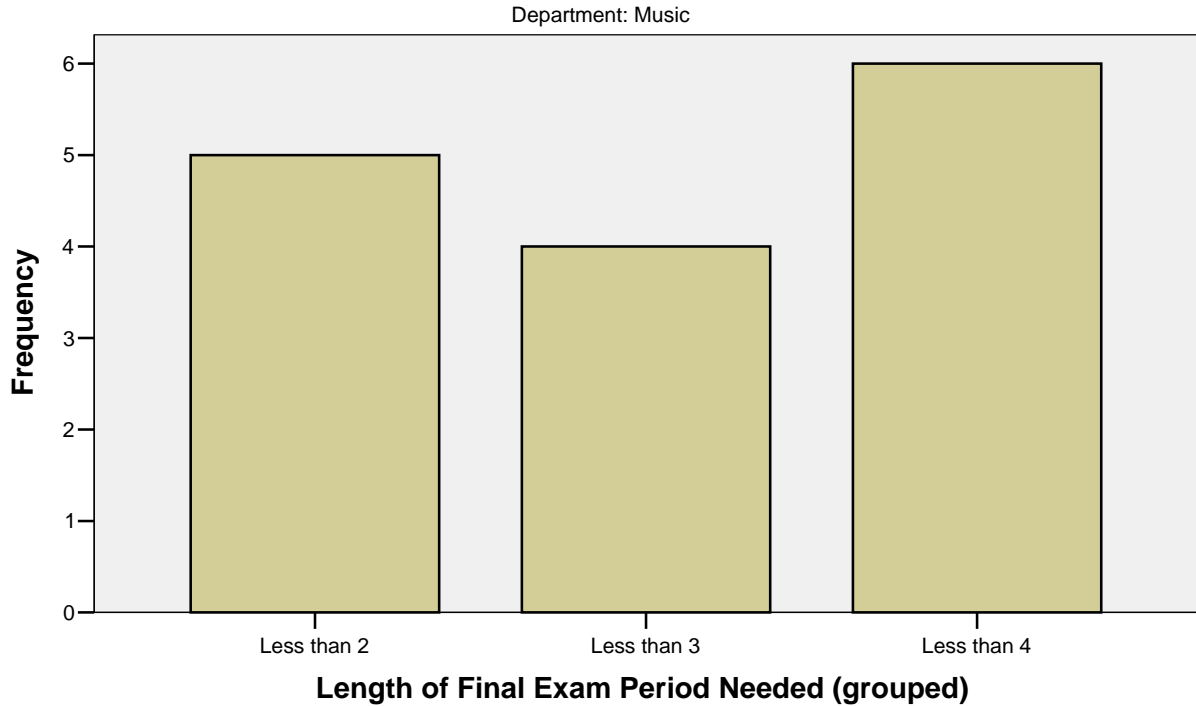
a Department = Music

Length of Final Exam Period Needed (grouped)(a)

		Frequency	Percent	Valid Percent	Cumulative Percent
Valid	Less than 2	5	6.9	33.3	33.3
	Less than 3	4	5.6	26.7	60.0
	Less than 4	6	8.3	40.0	100.0
	Total	15	20.8	100.0	
Missing	System	57	79.2		
Total		72	100.0		

a Department = Music

Length of Final Exam Period Needed (grouped)



Cases weighted by Number of Sections Summarized

Weight of Final as a Percent of Final Grade

Statistics(a)

Weight of Final as a Percent of Final Grade

N	Valid	63
	Missing	9
Mean		35.5873
Median		33.0000
Mode		33.00
Std. Deviation		19.80928
Minimum		15.00
Maximum		100.00

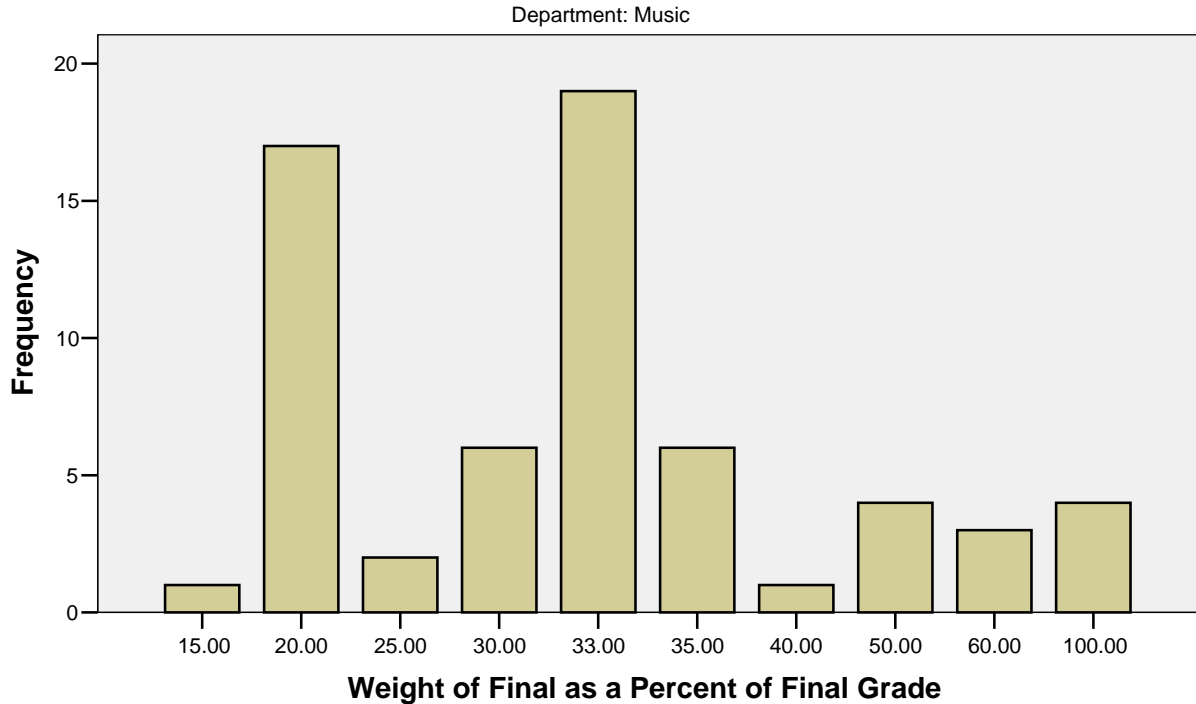
a Department = Music

Weight of Final as a Percent of Final Grade(a)

		Frequency	Percent	Valid Percent	Cumulative Percent
Valid	15.00	1	1.4	1.6	1.6
	20.00	17	23.6	27.0	28.6
	25.00	2	2.8	3.2	31.7
	30.00	6	8.3	9.5	41.3
	33.00	19	26.4	30.2	71.4
	35.00	6	8.3	9.5	81.0
	40.00	1	1.4	1.6	82.5
	50.00	4	5.6	6.3	88.9
	60.00	3	4.2	4.8	93.7
	100.00	4	5.6	6.3	100.0
	Total	63	87.5	100.0	
Missing	System	9	12.5		
Total		72	100.0		

a Department = Music

Weight of Final as a Percent of Final Grade



Cases weighted by Number of Sections Summarized

Weight of Final as a Percent of Final Grade (grouped)

Statistics(a)

Weight of Final as a Percent of Final Grade (grouped)

N	Valid	63
	Missing	9
Mean		4.3968
Median		4.0000
Mode		4.00
Std. Deviation		2.02038
Minimum		2.00
Maximum		11.00

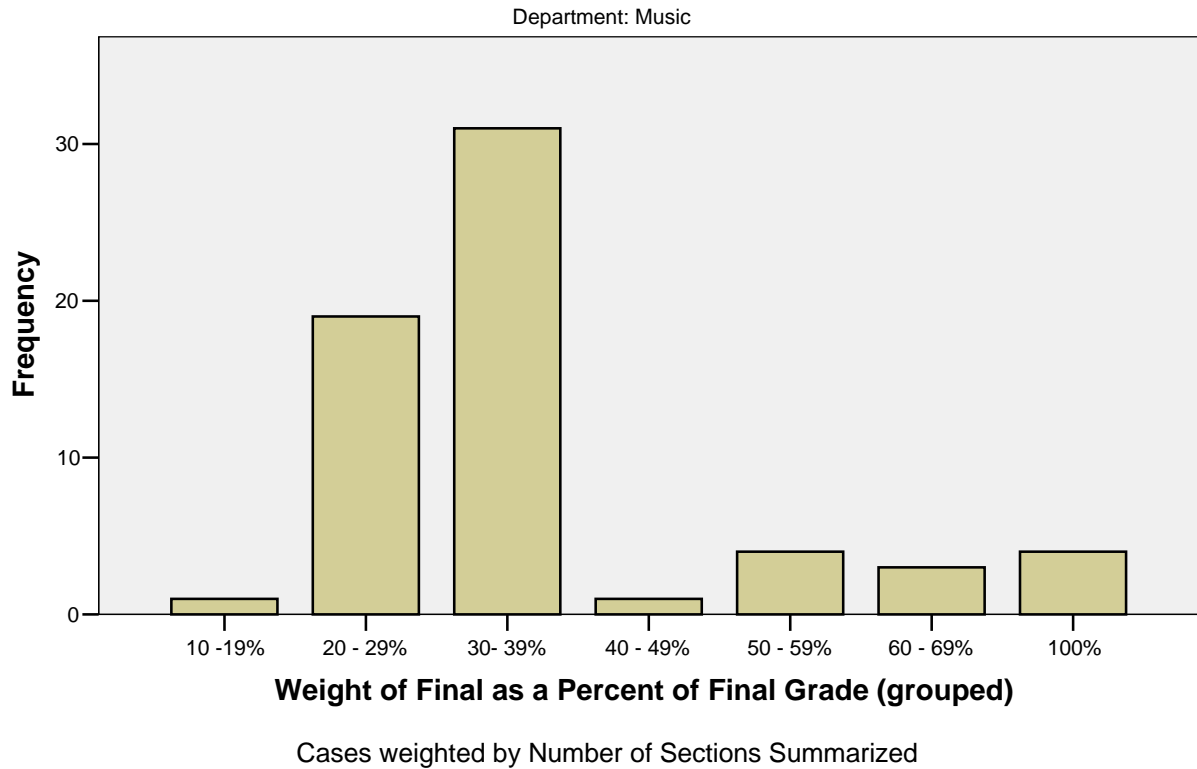
a Department = Music

Weight of Final as a Percent of Final Grade (grouped)(a)

		Frequency	Percent	Valid Percent	Cumulative Percent
Valid	10 -19%	1	1.4	1.6	1.6
	20 - 29%	19	26.4	30.2	31.7
	30- 39%	31	43.1	49.2	81.0
	40 - 49%	1	1.4	1.6	82.5
	50 - 59%	4	5.6	6.3	88.9
	60 - 69%	3	4.2	4.8	93.7
	100%	4	5.6	6.3	100.0
	Total	63	87.5	100.0	
Missing	System	9	12.5		
Total		72	100.0		

a Department = Music

Weight of Final as a Percent of Final Grade (grouped)



Significant Reading Period Needed

Statistics(a)

Significant Reading Period Needed

N	Valid	71
	Missing	1
Mean		.1268
Median		.0000
Mode		.00
Std. Deviation		.33507
Minimum		.00
Maximum		1.00

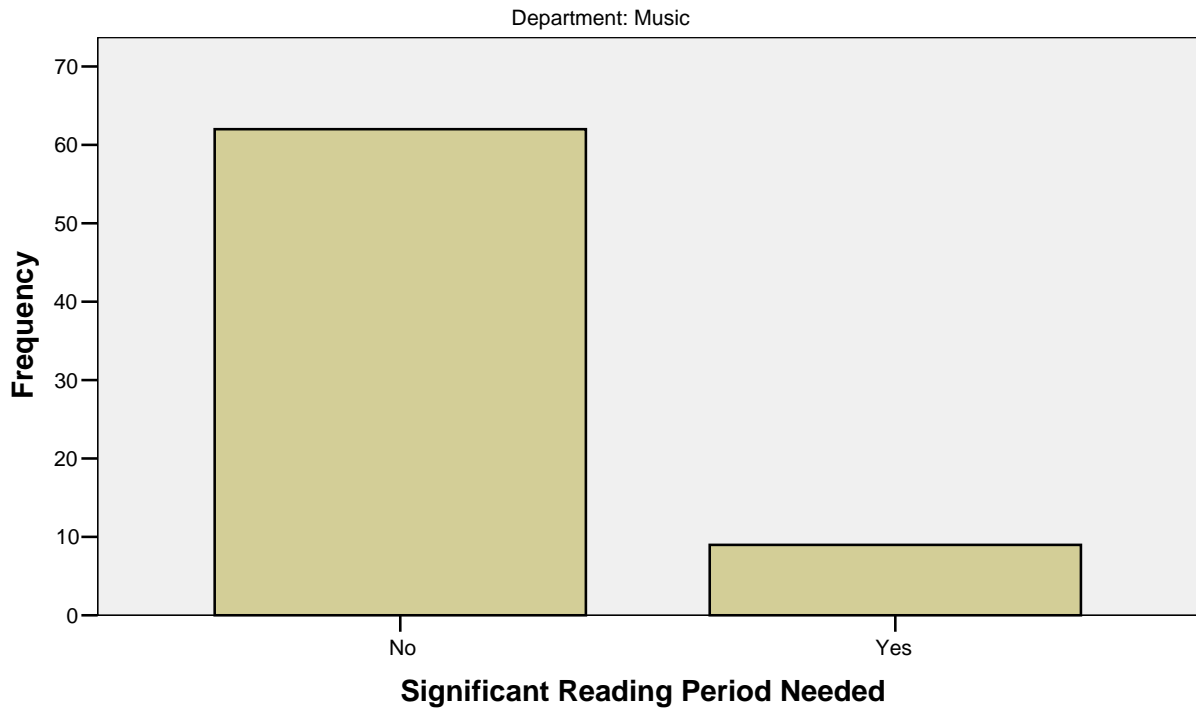
a Department = Music

Significant Reading Period Needed(a)

		Frequency	Percent	Valid Percent	Cumulative Percent
Valid	No	62	86.1	87.3	87.3
	Yes	9	12.5	12.7	100.0
	Total	71	98.6	100.0	
Missing	System	1	1.4		
Total		72	100.0		

a Department = Music

Significant Reading Period Needed



Cases weighted by Number of Sections Summarized

Number of Short Papers Assigned

Statistics(a)

Number of Short Papers Assigned

N	Valid	21
	Missing	51
Mean		3.8571
Median		1.0000
Mode		.00
Std. Deviation		5.21810
Minimum		.00
Maximum		15.00

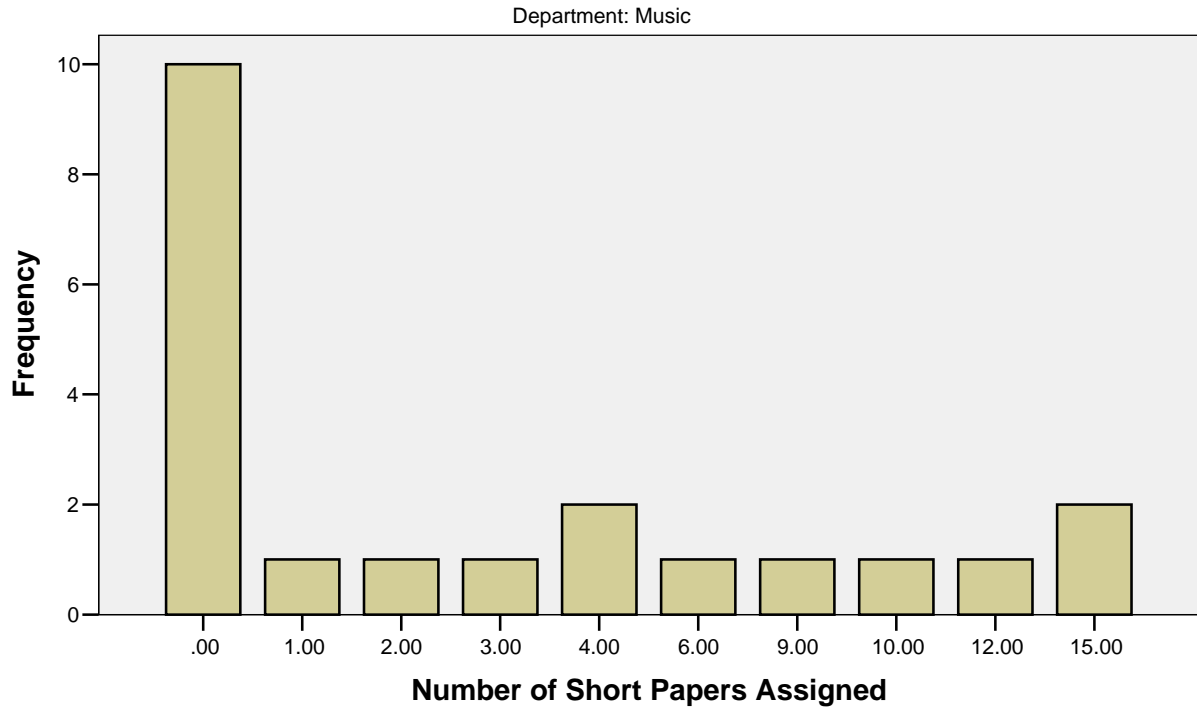
a Department = Music

Number of Short Papers Assigned(a)

		Frequency	Percent	Valid Percent	Cumulative Percent
Valid	.00	10	13.9	47.6	47.6
	1.00	1	1.4	4.8	52.4
	2.00	1	1.4	4.8	57.1
	3.00	1	1.4	4.8	61.9
	4.00	2	2.8	9.5	71.4
	6.00	1	1.4	4.8	76.2
	9.00	1	1.4	4.8	81.0
	10.00	1	1.4	4.8	85.7
	12.00	1	1.4	4.8	90.5
	15.00	2	2.8	9.5	100.0
	Total	21	29.2	100.0	
Missing	System	51	70.8		
Total		72	100.0		

a Department = Music

Number of Short Papers Assigned



Cases weighted by Number of Sections Summarized

Number of Hours Needed per Short Paper Assigned

Statistics(a)

Number of Hours Needed per Short Paper Assigned

N	Valid	7
	Missing	65
Mean		1.2857
Median		1.0000
Mode		1.00
Std. Deviation		.48795
Minimum		1.00
Maximum		2.00

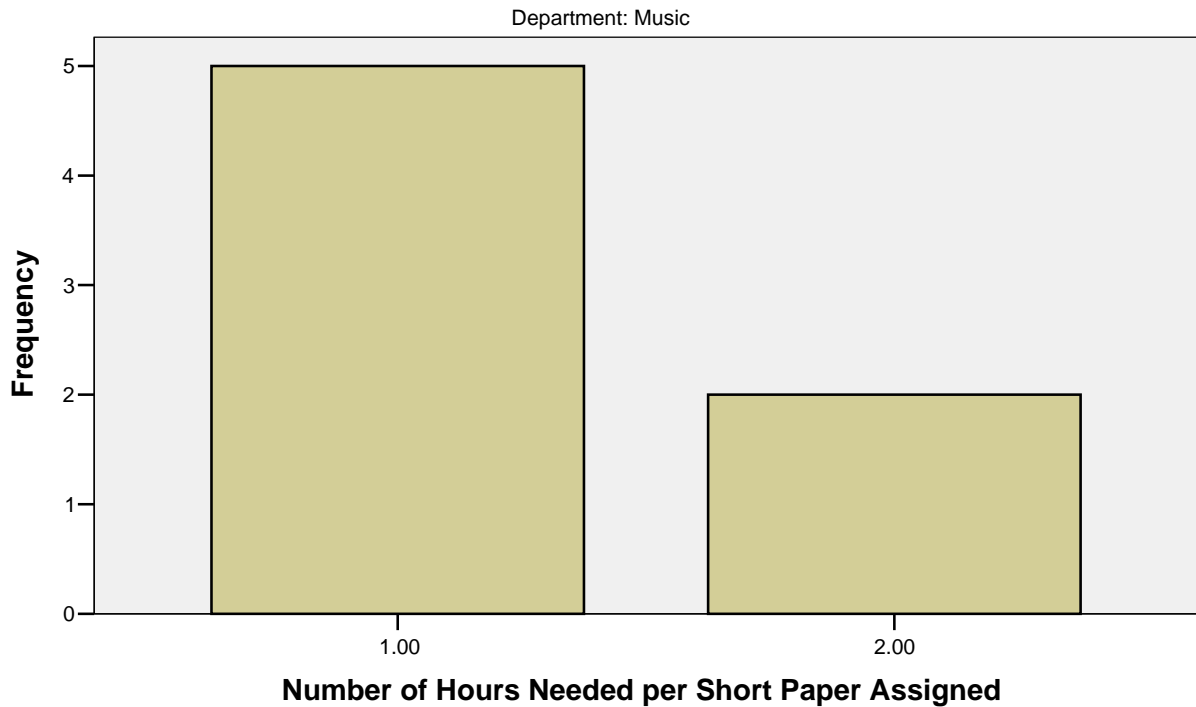
a Department = Music

Number of Hours Needed per Short Paper Assigned(a)

		Frequency	Percent	Valid Percent	Cumulative Percent
Valid	1.00	5	6.9	71.4	71.4
	2.00	2	2.8	28.6	100.0
	Total	7	9.7	100.0	
Missing	System	65	90.3		
Total		72	100.0		

a Department = Music

Number of Hours Needed per Short Paper Assigned



Cases weighted by Number of Sections Summarized

Number of Short Papers Assigned (grouped)

Statistics(b)

Number of Short Papers Assigned (grouped)

N	Valid	11
	Missing	61
Mean		4.8182
Median		6.0000
Mode		6.00(a)
Std. Deviation		2.13627
Minimum		1.00
Maximum		7.00

a Multiple modes exist. The smallest value is shown

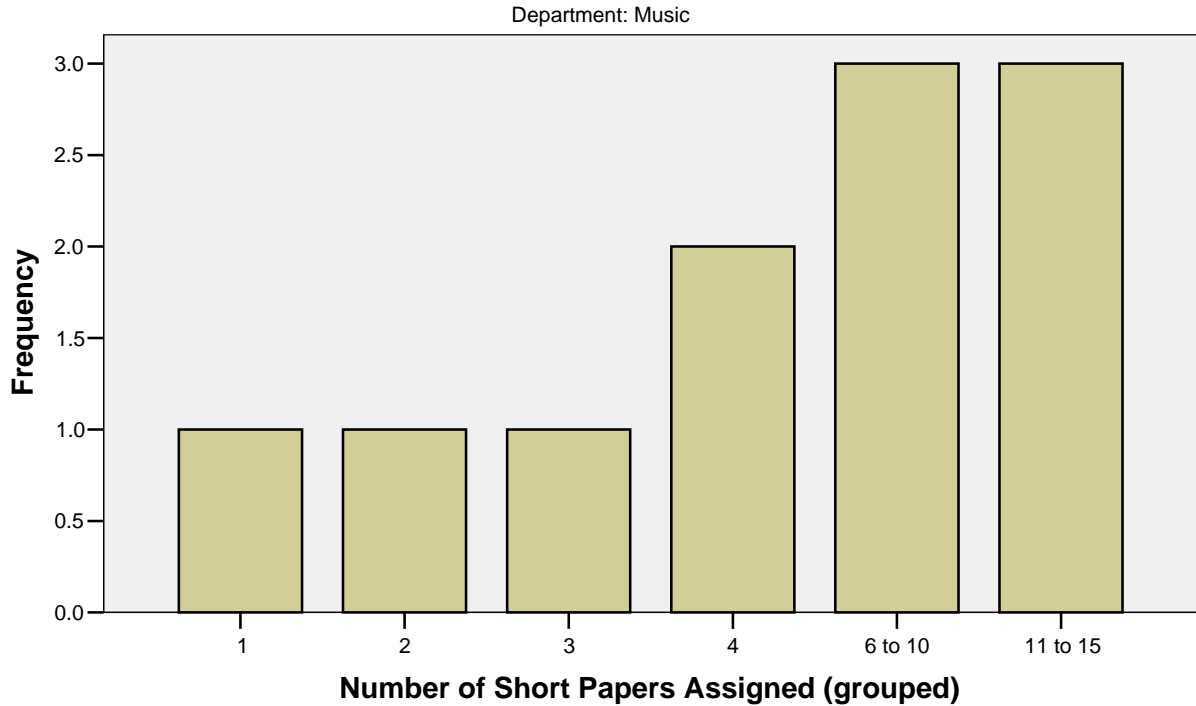
b Department = Music

Number of Short Papers Assigned (grouped)(a)

		Frequency	Percent	Valid Percent	Cumulative Percent
Valid	1	1	1.4	9.1	9.1
	2	1	1.4	9.1	18.2
	3	1	1.4	9.1	27.3
	4	2	2.8	18.2	45.5
	6 to 10	3	4.2	27.3	72.7
	11 to 15	3	4.2	27.3	100.0
	Total	11	15.3	100.0	
Missing	System	61	84.7		
Total		72	100.0		

a Department = Music

Number of Short Papers Assigned (grouped)



Cases weighted by Number of Sections Summarized

Number of Hours Needed per Short Paper Assigned (grouped)

Statistics(a)

Number of Hours Needed per Short Paper Assigned (grouped)

N	Valid	7
	Missing	65
Mean		1.2857
Median		1.0000
Mode		1.00
Std. Deviation		.48795
Minimum		1.00
Maximum		2.00

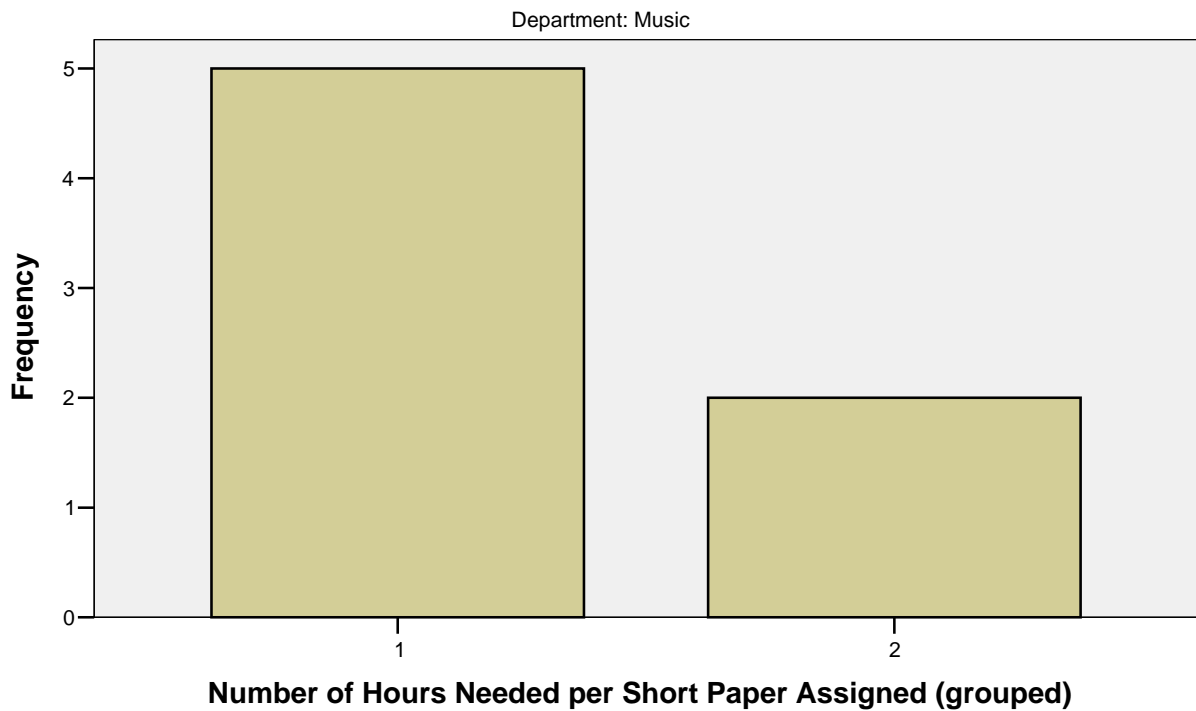
a Department = Music

Number of Hours Needed per Short Paper Assigned (grouped)(a)

		Frequency	Percent	Valid Percent	Cumulative Percent
Valid	1	5	6.9	71.4	71.4
	2	2	2.8	28.6	100.0
	Total	7	9.7	100.0	
Missing	System	65	90.3		
Total		72	100.0		

a Department = Music

Number of Hours Needed per Short Paper Assigned (grouped)



Cases weighted by Number of Sections Summarized

Number of Long Papers Assigned

Statistics(a)

Number of Long Papers Assigned

N	Valid	0
	Missing	72

a Department = Music

Number of Long Papers Assigned(a)

	Frequency	Percent
Missing System	72	100.0

a Department = Music

Number of Hours Needed per Long Paper Assigned

Statistics(a)

Number of Hours Needed per Long Paper Assigned

N	Valid	47
	Missing	25
Mean		14.7021
Median		14.0000
Mode		14.00
Std. Deviation		14.99843
Minimum		1.00
Maximum		100.00

a Department = Music

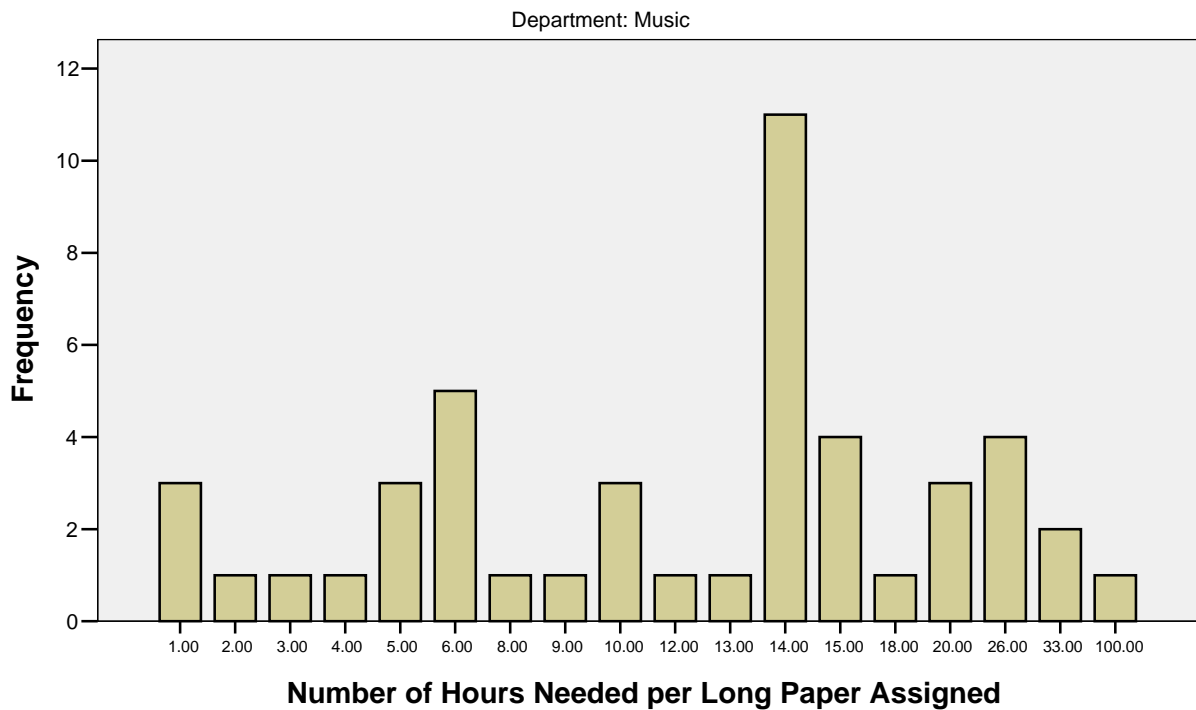
Number of Hours Needed per Long Paper Assigned(a)

	Frequency	Percent	Valid Percent	Cumulative Percent
Valid 1.00	3	4.2	6.4	6.4
2.00	1	1.4	2.1	8.5
3.00	1	1.4	2.1	10.6
4.00	1	1.4	2.1	12.8
5.00	3	4.2	6.4	19.1
6.00	5	6.9	10.6	29.8
8.00	1	1.4	2.1	31.9
9.00	1	1.4	2.1	34.0
10.00	3	4.2	6.4	40.4
12.00	1	1.4	2.1	42.6
13.00	1	1.4	2.1	44.7
14.00	11	15.3	23.4	68.1
15.00	4	5.6	8.5	76.6
18.00	1	1.4	2.1	78.7
20.00	3	4.2	6.4	85.1
26.00	4	5.6	8.5	93.6

	33.00	2	2.8	4.3	97.9
	100.00	1	1.4	2.1	100.0
	Total	47	65.3	100.0	
Missing	System	25	34.7		
Total		72	100.0		

a Department = Music

Number of Hours Needed per Long Paper Assigned



Cases weighted by Number of Sections Summarized

Number of Long Papers Assigned (grouped)

Statistics(a)

Number of Long Papers Assigned (grouped)

N	Valid	0
	Missing	72

a Department = Music

Number of Long Papers Assigned (grouped)(a)

	Frequency	Percent
Missing System	72	100.0

a Department = Music

Number of Hours Needed per Long Paper Assigned (grouped)

Statistics(a)

Number of Hours Needed per Long Paper Assigned (grouped)

N	Valid	47
	Missing	25
Mean		6.4043
Median		7.0000
Mode		7.00
Std. Deviation		2.06060
Minimum		1.00
Maximum		9.00

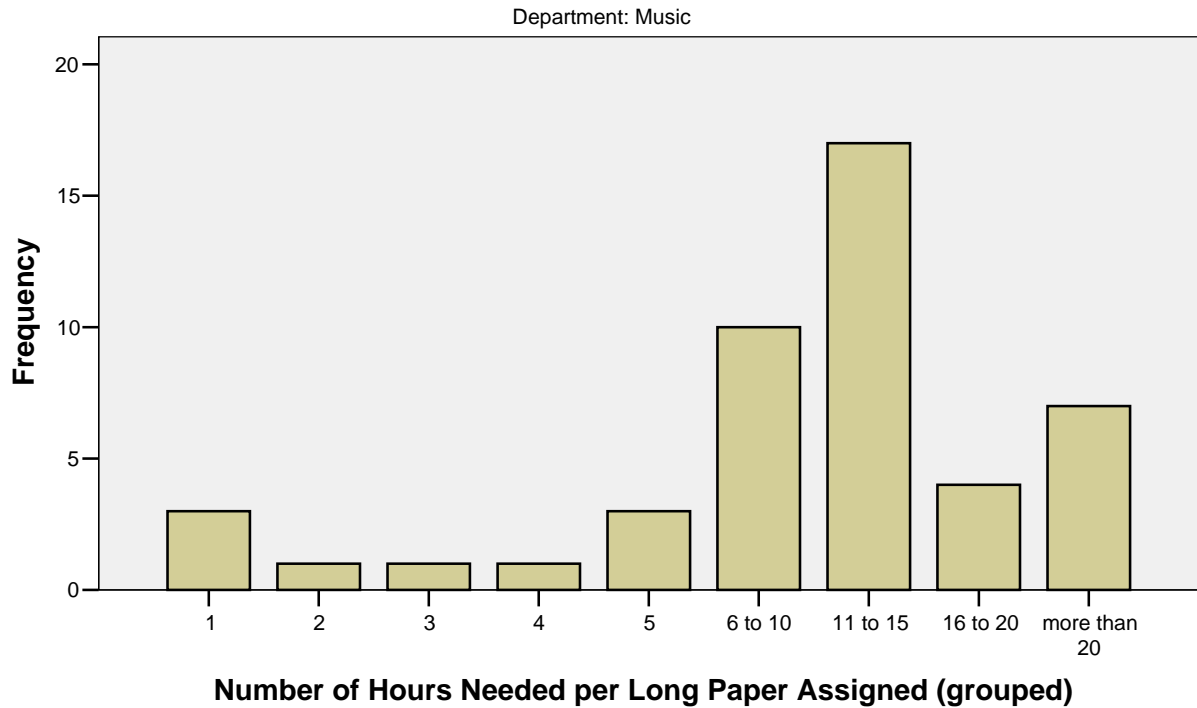
a Department = Music

Number of Hours Needed per Long Paper Assigned (grouped)(a)

		Frequency	Percent	Valid Percent	Cumulative Percent
Valid	1	3	4.2	6.4	6.4
	2	1	1.4	2.1	8.5
	3	1	1.4	2.1	10.6
	4	1	1.4	2.1	12.8
	5	3	4.2	6.4	19.1
	6 to 10	10	13.9	21.3	40.4
	11 to 15	17	23.6	36.2	76.6
	16 to 20	4	5.6	8.5	85.1
	more than 20	7	9.7	14.9	100.0
	Total	47	65.3	100.0	
Missing	System	25	34.7		
Total		72	100.0		

a Department = Music

Number of Hours Needed per Long Paper Assigned (grouped)



Cases weighted by Number of Sections Summarized

Number of Problem Solving Activities Assigned

Statistics(a)

Number of Problem Solving Activities Assigned

N	Valid	18
	Missing	54
Mean		2.8056
Median		1.7500
Mode		.00
Std. Deviation		4.08418
Minimum		.00
Maximum		12.00

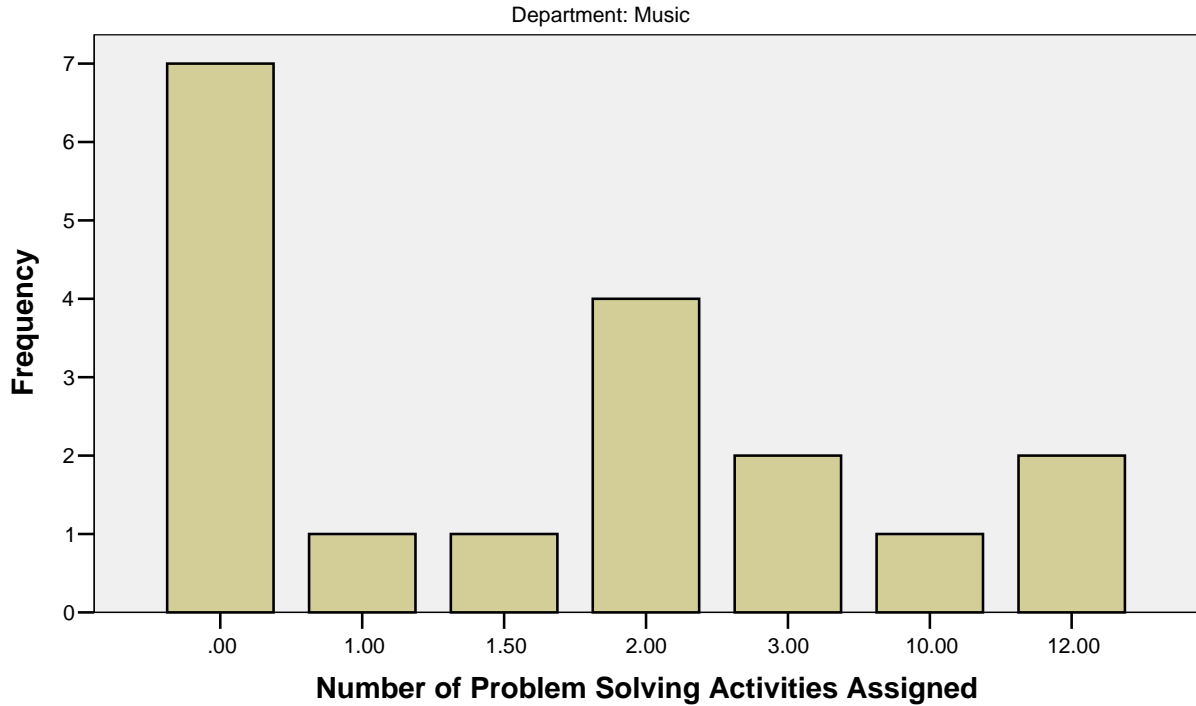
a Department = Music

Number of Problem Solving Activities Assigned(a)

		Frequency	Percent	Valid Percent	Cumulative Percent
Valid	.00	7	9.7	38.9	38.9
	1.00	1	1.4	5.6	44.4
	1.50	1	1.4	5.6	50.0
	2.00	4	5.6	22.2	72.2
	3.00	2	2.8	11.1	83.3
	10.00	1	1.4	5.6	88.9
	12.00	2	2.8	11.1	100.0
	Total	18	25.0	100.0	
Missing	System	54	75.0		
Total		72	100.0		

a Department = Music

Number of Problem Solving Activities Assigned



Cases weighted by Number of Sections Summarized

Number of Hours Needed per Problem Solving Activity Assigned

Statistics(a)

Number of Hours Needed per Problem Solving Activity Assigned

N	Valid	8
	Missing	64
Mean		7.7500
Median		8.0000
Mode		8.00
Std. Deviation		5.11999
Minimum		2.00
Maximum		15.00

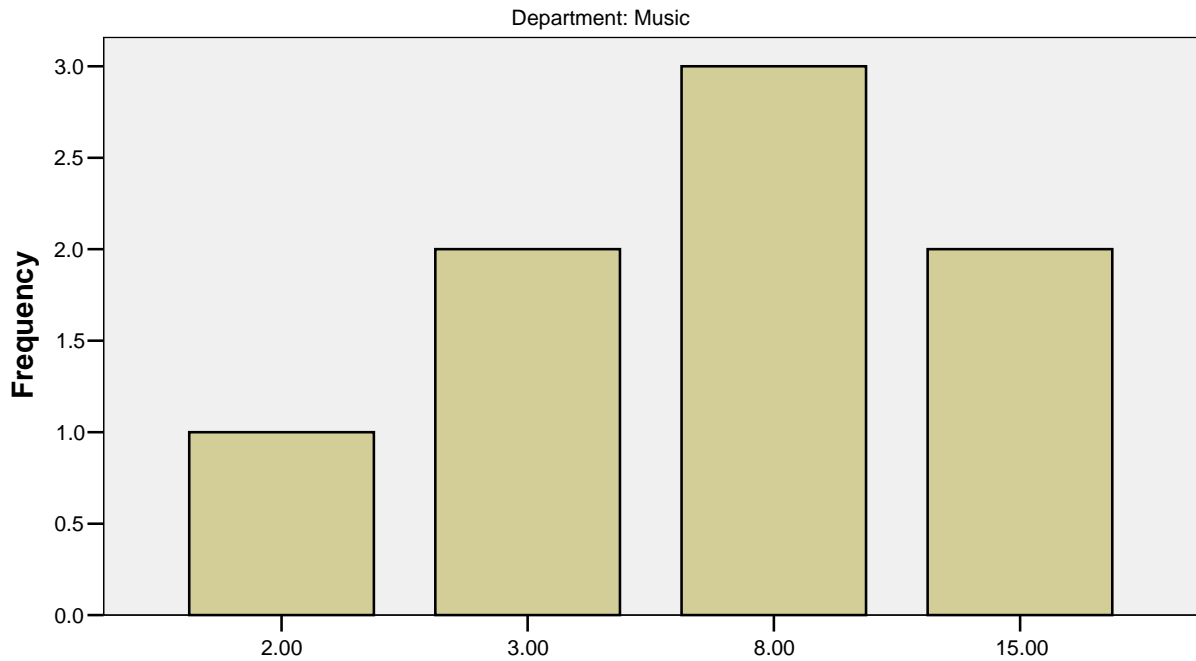
a Department = Music

Number of Hours Needed per Problem Solving Activity Assigned(a)

		Frequency	Percent	Valid Percent	Cumulative Percent
Valid	2.00	1	1.4	12.5	12.5
	3.00	2	2.8	25.0	37.5
	8.00	3	4.2	37.5	75.0
	15.00	2	2.8	25.0	100.0
	Total	8	11.1	100.0	
Missing	System	64	88.9		
Total		72	100.0		

a Department = Music

Number of Hours Needed per Problem Solving Activity Assigned



Number of Hours Needed per Problem Solving Activity Assigned

Cases weighted by Number of Sections Summarized

Number of Problem Solving Activities Assigned (grouped)

Statistics(a)

Number of Problem Solving Activities Assigned (grouped)

N	Valid	11
	Missing	61
Mean		3.3636
Median		2.0000
Mode		2.00
Std. Deviation		2.20330
Minimum		1.00
Maximum		7.00

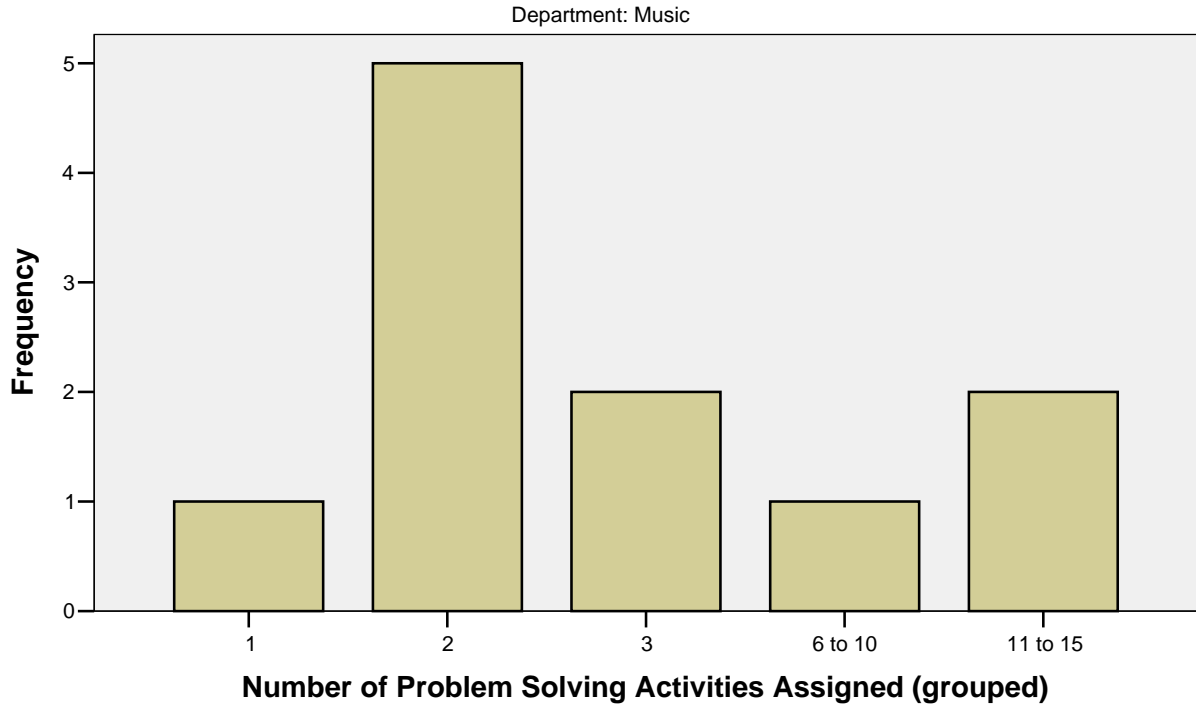
a Department = Music

Number of Problem Solving Activities Assigned (grouped)(a)

		Frequency	Percent	Valid Percent	Cumulative Percent
Valid	1	1	1.4	9.1	9.1
	2	5	6.9	45.5	54.5
	3	2	2.8	18.2	72.7
	6 to 10	1	1.4	9.1	81.8
	11 to 15	2	2.8	18.2	100.0
	Total	11	15.3	100.0	
Missing	System	61	84.7		
Total		72	100.0		

a Department = Music

Number of Problem Solving Activities Assigned (grouped)



Cases weighted by Number of Sections Summarized

Number of Hours Needed per Problem Solving Activity Assigned (grouped)

Statistics(a)

Number of Hours Needed per Problem Solving Activity Assigned (grouped)

N	Valid	8
	Missing	64
Mean		5.0000
Median		6.0000
Mode		6.00
Std. Deviation		2.00000
Minimum		2.00
Maximum		7.00

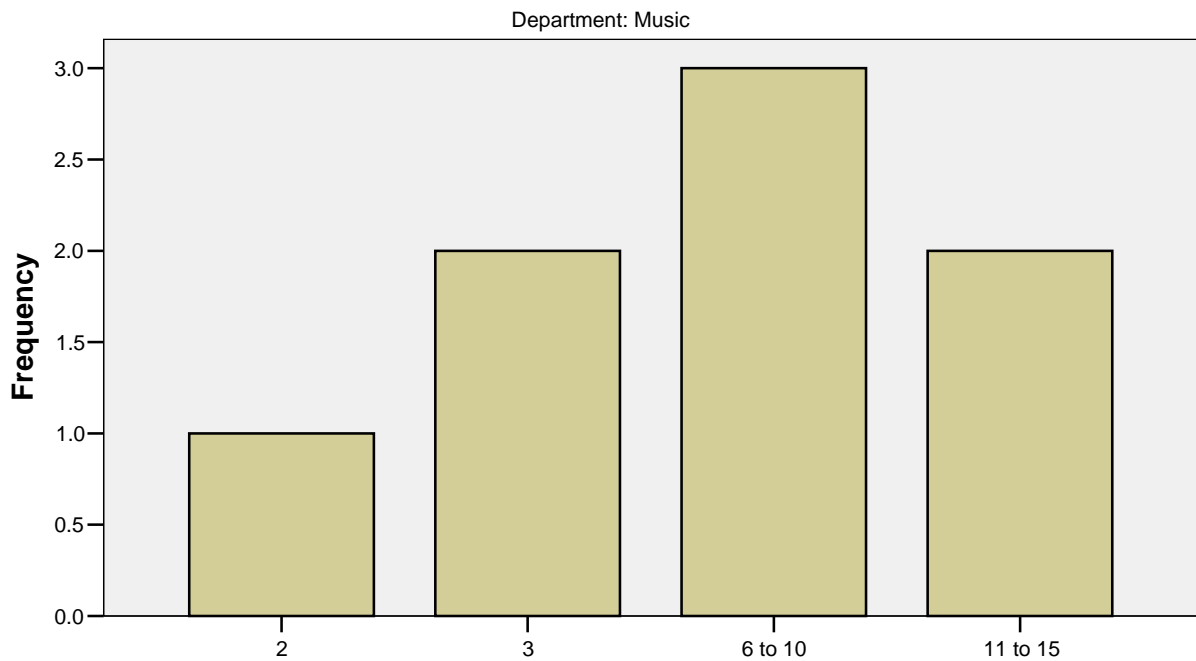
a Department = Music

Number of Hours Needed per Problem Solving Activity Assigned (grouped)(a)

		Frequency	Percent	Valid Percent	Cumulative Percent
Valid	2	1	1.4	12.5	12.5
	3	2	2.8	25.0	37.5
	6 to 10	3	4.2	37.5	75.0
	11 to 15	2	2.8	25.0	100.0
	Total	8	11.1	100.0	
Missing	System	64	88.9		
Total		72	100.0		

a Department = Music

Number of Hours Needed per Problem Solving Activity Assigned (grouped)



Number of Hours Needed per Problem Solving Activity Assigned (grouped)

Cases weighted by Number of Sections Summarized

Number of Other Significant Out-of-Class Assignments

Statistics(a)

Number of Other Significant Out-of-Class Assignments

N	Valid	0
	Missing	72

a Department = Music

Number of Other Significant Out-of-Class Assignments(a)

	Frequency	Percent
Missing System	72	100.0

a Department = Music

Number of Hourse Needed per Other Significant Assignments

Statistics(a)

Number of Hourse Needed per Other Significant Assignments

N	Valid	40
	Missing	32
Mean		5.4375
Median		2.7500
Mode		2.00
Std. Deviation		7.57796
Minimum		1.00
Maximum		30.00

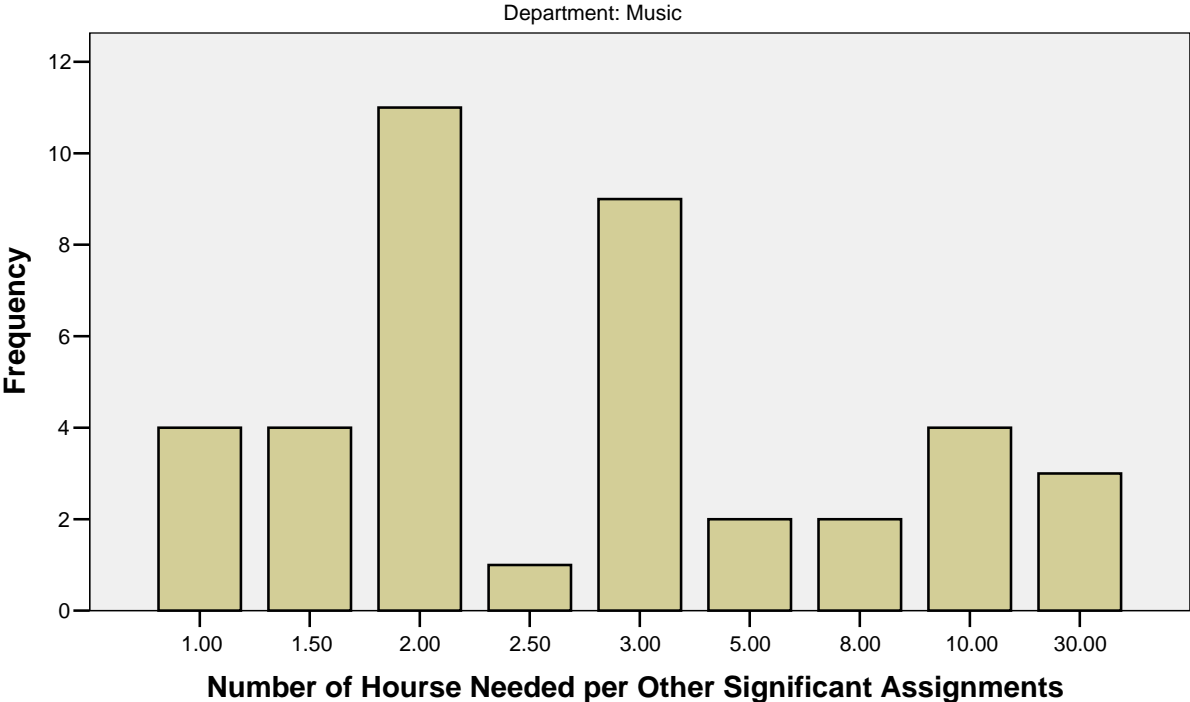
a Department = Music

Number of Hourse Needed per Other Significant Assignments(a)

	Frequency	Percent	Valid Percent	Cumulative Percent
Valid 1.00	4	5.6	10.0	10.0
1.50	4	5.6	10.0	20.0
2.00	11	15.3	27.5	47.5
2.50	1	1.4	2.5	50.0
3.00	9	12.5	22.5	72.5
5.00	2	2.8	5.0	77.5
8.00	2	2.8	5.0	82.5
10.00	4	5.6	10.0	92.5
30.00	3	4.2	7.5	100.0
Total	40	55.6	100.0	
Missing System	32	44.4		
Total	72	100.0		

a Department = Music

Number of Hourse Needed per Other Significant Assignments



Cases weighted by Number of Sections Summarized

Number of Other Significant Out-of-Class Assignments (grouped)

Statistics(a)

Number of Other Significant Out-of-Class Assignments (grouped)

N	Valid	0
	Missing	72

a Department = Music

Number of Other Significant Out-of-Class Assignments (grouped)(a)

	Frequency	Percent
--	-----------	---------

Missing	System	72	100.0
---------	--------	----	-------

a Department = Music

Number of Hourse Needed per Other Significant Assignments (grouped)

Statistics(a)

Number of Hourse Needed per Other Significant Assignments (grouped)

N	Valid	40
	Missing	32
Mean		3.4250
Median		3.0000
Mode		2.00
Std. Deviation		2.22903
Minimum		1.00
Maximum		9.00

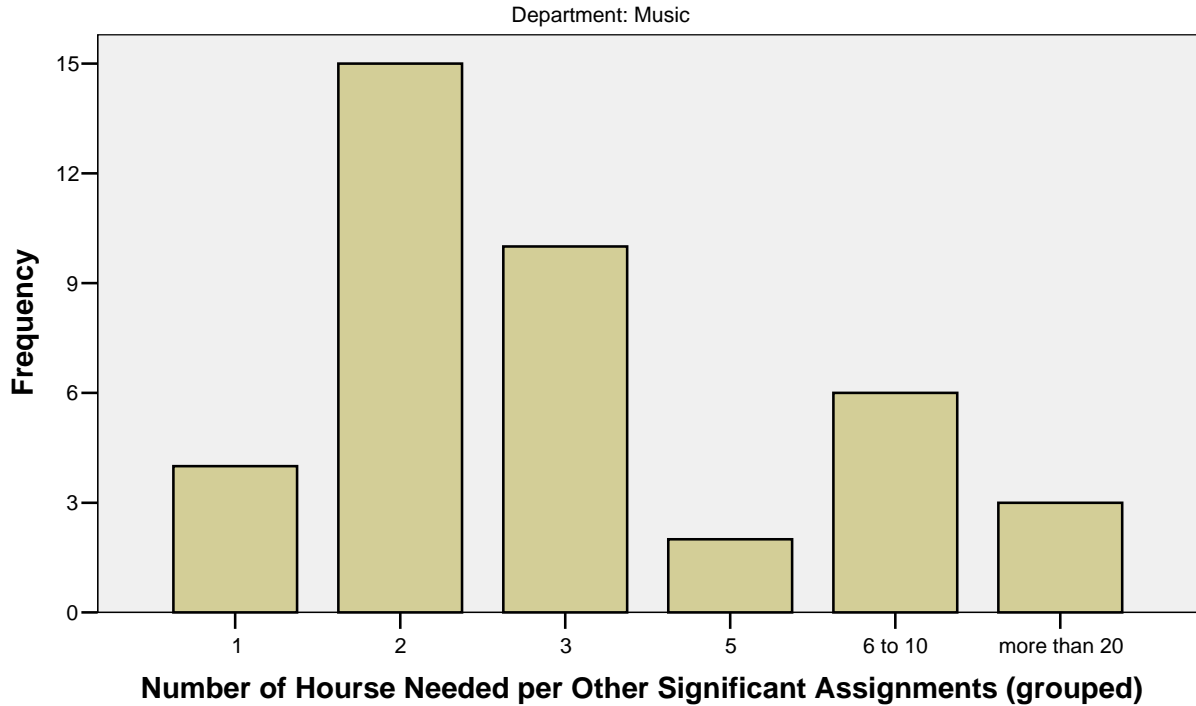
a Department = Music

Number of Hourse Needed per Other Significant Assignments (grouped)(a)

		Frequency	Percent	Valid Percent	Cumulative Percent
Valid	1	4	5.6	10.0	10.0
	2	15	20.8	37.5	47.5
	3	10	13.9	25.0	72.5
	5	2	2.8	5.0	77.5
	6 to 10	6	8.3	15.0	92.5
	more than 20	3	4.2	7.5	100.0
	Total	40	55.6	100.0	
Missing	System	32	44.4		
Total		72	100.0		

a Department = Music

Number of Hourse Needed per Other Significant Assignments (grouped)



Cases weighted by Number of Sections Summarized

Weight of Out-of-Class Assignments as a Percent of Final Grade

Statistics(a)

Weight of Out-of-Class Assignments as a Percent of Final Grade

N	Valid	51
	Missing	21
Mean		42.8824
Median		35.0000
Mode		20.00
Std. Deviation		22.97707
Minimum		10.00
Maximum		100.00

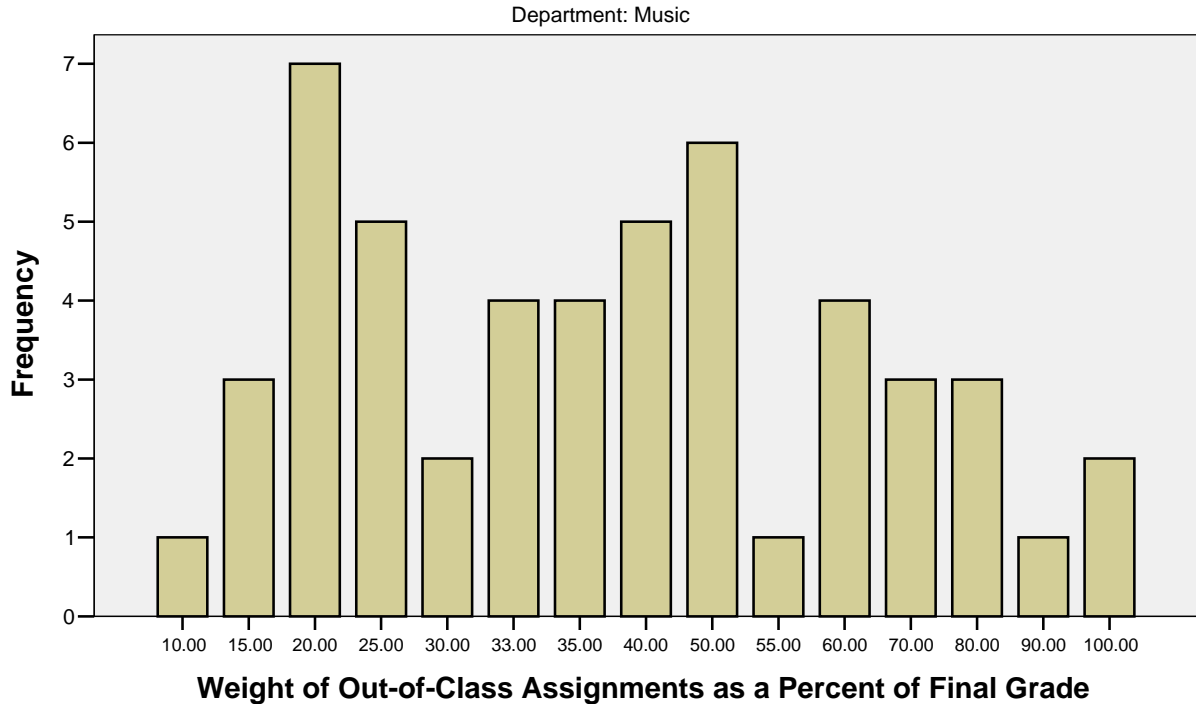
a Department = Music

Weight of Out-of-Class Assignments as a Percent of Final Grade(a)

		Frequency	Percent	Valid Percent	Cumulative Percent
Valid	10.00	1	1.4	2.0	2.0
	15.00	3	4.2	5.9	7.8
	20.00	7	9.7	13.7	21.6
	25.00	5	6.9	9.8	31.4
	30.00	2	2.8	3.9	35.3
	33.00	4	5.6	7.8	43.1
	35.00	4	5.6	7.8	51.0
	40.00	5	6.9	9.8	60.8
	50.00	6	8.3	11.8	72.5
	55.00	1	1.4	2.0	74.5
	60.00	4	5.6	7.8	82.4
	70.00	3	4.2	5.9	88.2
	80.00	3	4.2	5.9	94.1
	90.00	1	1.4	2.0	96.1
	100.00	2	2.8	3.9	100.0
Total		51	70.8	100.0	
Missing	System	21	29.2		
Total		72	100.0		

a Department = Music

Weight of Out-of-Class Assignments as a Percent of Final Grade



Cases weighted by Number of Sections Summarized

Weight of Out-of-Class Assignments as a Percent of Final Grade (grouped)

Statistics(a)

Weight of Out-of-Class Assignments as a Percent of Final Grade (grouped)

N	Valid	51
	Missing	21
Mean		5.1373
Median		4.0000
Mode		3.00
Std. Deviation		2.40016
Minimum		2.00
Maximum		11.00

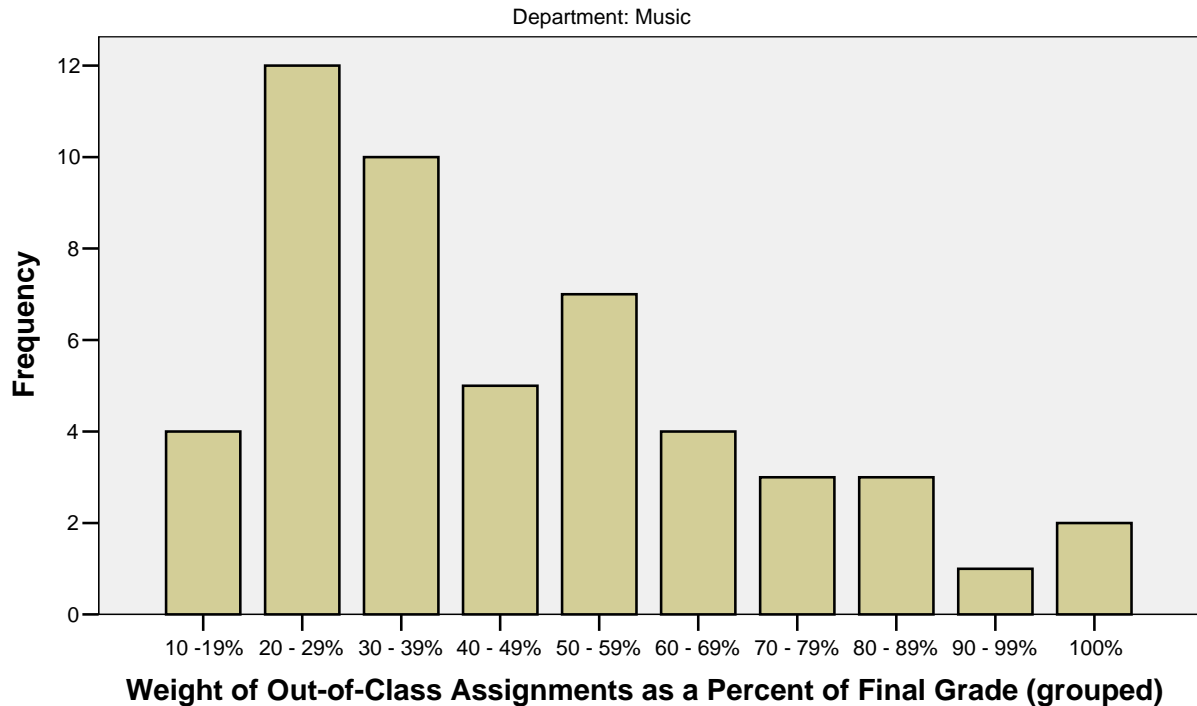
a Department = Music

Weight of Out-of-Class Assignments as a Percent of Final Grade (grouped)(a)

		Frequency	Percent	Valid Percent	Cumulative Percent
Valid	10 -19%	4	5.6	7.8	7.8
	20 - 29%	12	16.7	23.5	31.4
	30 - 39%	10	13.9	19.6	51.0
	40 - 49%	5	6.9	9.8	60.8
	50 - 59%	7	9.7	13.7	74.5
	60 - 69%	4	5.6	7.8	82.4
	70 - 79%	3	4.2	5.9	88.2
	80 - 89%	3	4.2	5.9	94.1
	90 - 99%	1	1.4	2.0	96.1
	100%	2	2.8	3.9	100.0
	Total	51	70.8	100.0	
Missing	System	21	29.2		
Total		72	100.0		

a Department = Music

Weight of Out-of-Class Assignments as a Percent of Final Grade (grouped)



Cases weighted by Number of Sections Summarized

Scheduled Laboratory, Studio or Practicum

Statistics(a)

Scheduled Laboratory, Studio or Practicum

N	Valid	72
	Missing	0
Mean		.3750
Median		.0000
Mode		.00
Std. Deviation		.48752
Minimum		.00
Maximum		1.00

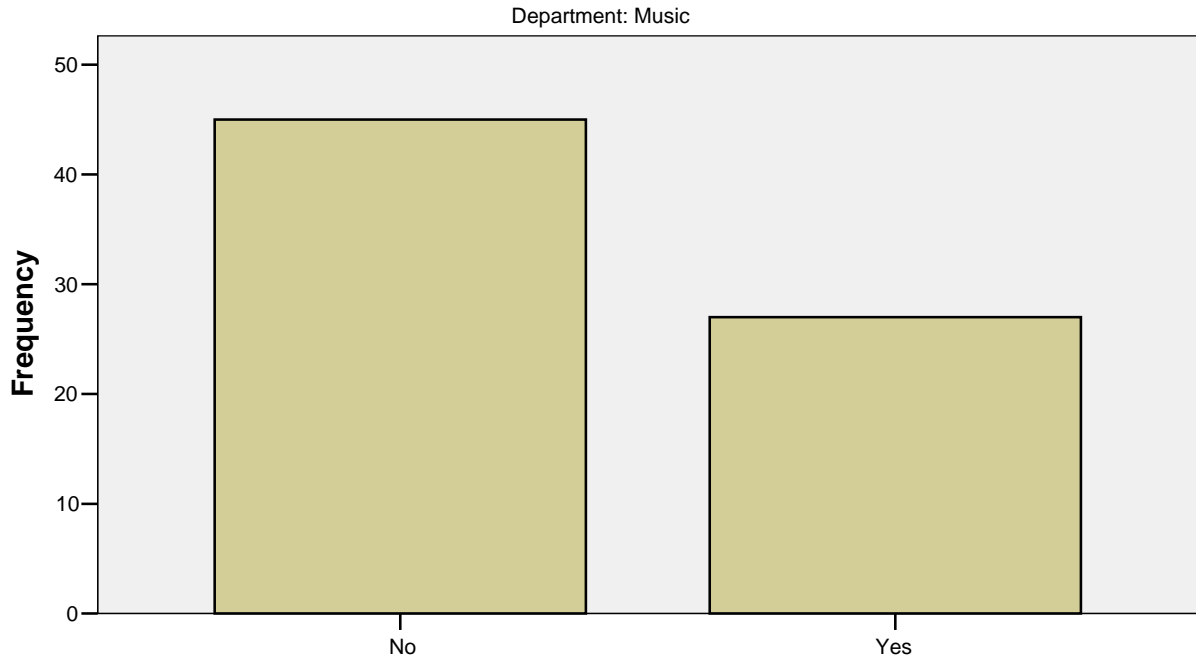
a Department = Music

Scheduled Laboratory, Studio or Practicum(a)

		Frequency	Percent	Valid Percent	Cumulative Percent
Valid	No	45	62.5	62.5	62.5
	Yes	27	37.5	37.5	100.0
	Total	72	100.0	100.0	

a Department = Music

Scheduled Laboratory, Studio or Practicum



Scheduled Laboratory, Studio or Practicum
Cases weighted by Number of Sections Summarized

Students Required to Meet out of Class

Statistics(a)

Students Required to Meet out of Class

N	Valid	72
	Missing	0
Mean		2.28
Median		3.00
Mode		3
Std. Deviation		.892
Minimum		1
Maximum		3

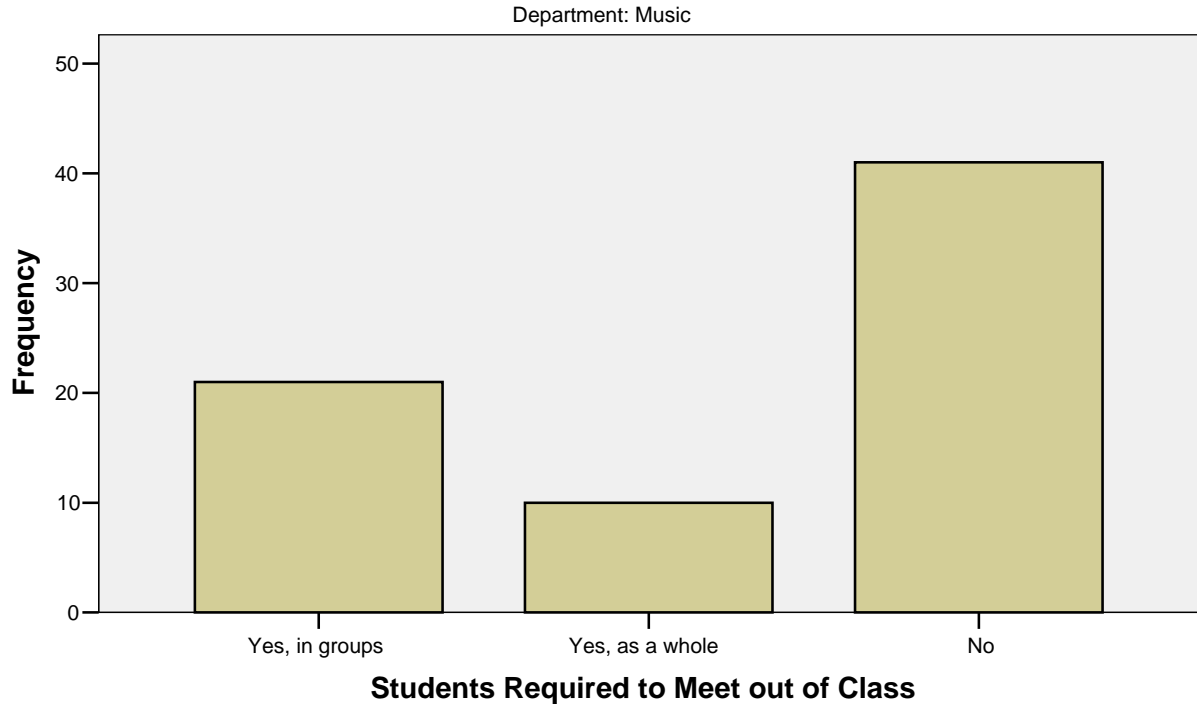
a Department = Music

Students Required to Meet out of Class(a)

	Frequency	Percent	Valid Percent	Cumulative Percent
Valid Yes, in groups	21	29.2	29.2	29.2
Yes, as a whole	10	13.9	13.9	43.1
No	41	56.9	56.9	100.0
Total	72	100.0	100.0	

a Department = Music

Students Required to Meet out of Class



Cases weighted by Number of Sections Summarized

Use of "Fourth Hour"

Statistics(a)

Use of "Fourth Hour"

N	Valid	71
	Missing	1
Mean		2.5211
Median		3.0000
Mode		3.00
Std. Deviation		.75326
Minimum		1.00
Maximum		3.00

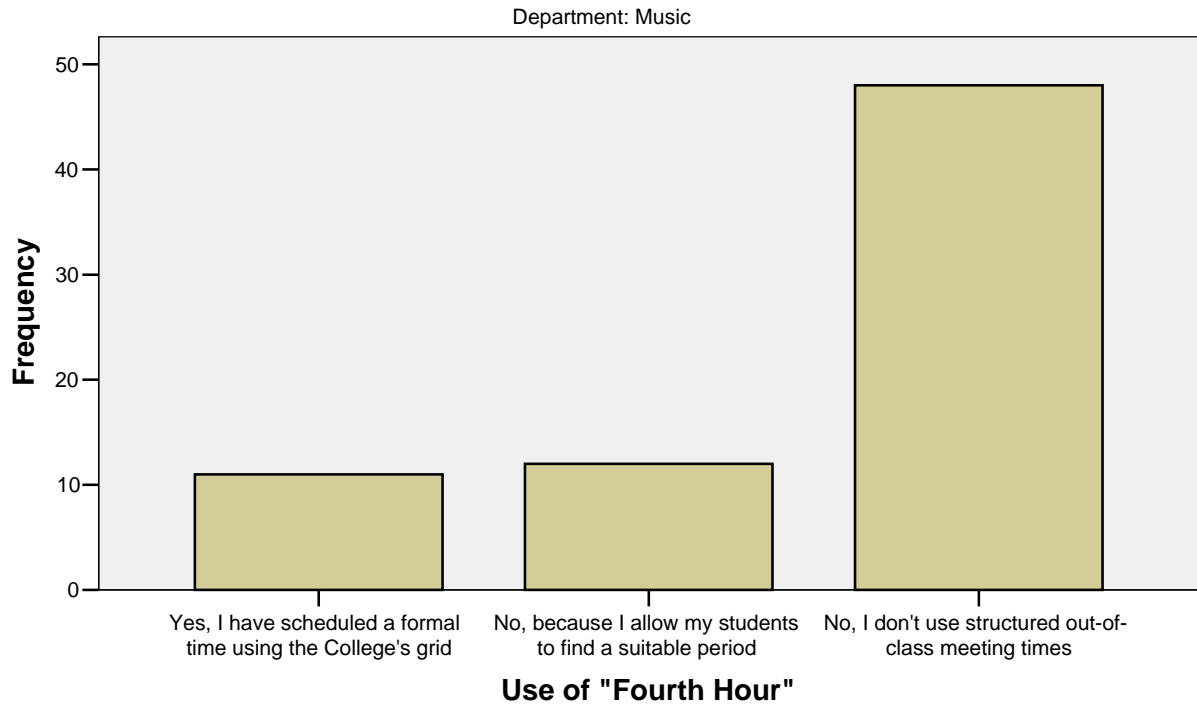
a Department = Music

Use of "Fourth Hour"(a)

		Frequency	Percent	Valid Percent	Cumulative Percent
Valid	Yes, I have scheduled a formal time using the College's grid	11	15.3	15.5	15.5
	No, because I allow my students to find a suitable period	12	16.7	16.9	32.4
	No, I don't use structured out-of-class meeting times	48	66.7	67.6	100.0
	Total	71	98.6	100.0	
Missing	System	1	1.4		
Total		72	100.0		

a Department = Music

Use of "Fourth Hour"



Cases weighted by Number of Sections Summarized

Colloquia Period Overlap

Statistics(a)

Colloquia Period Overlap

N	Valid	72
	Missing	0
Mean		.0417
Median		.0000
Mode		.00
Std. Deviation		.20123
Minimum		.00
Maximum		1.00

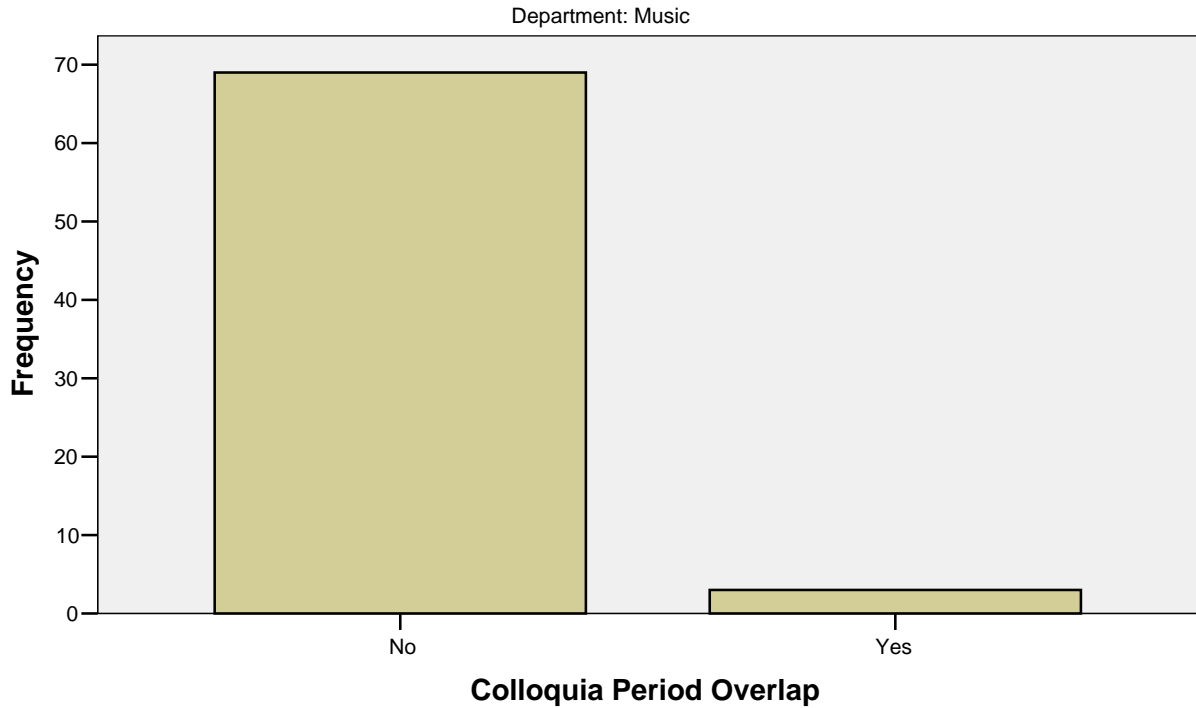
a Department = Music

Colloquia Period Overlap(a)

		Frequency	Percent	Valid Percent	Cumulative Percent
Valid	No	69	95.8	95.8	95.8
	Yes	3	4.2	4.2	100.0
	Total	72	100.0	100.0	

a Department = Music

Colloquia Period Overlap



Cases weighted by Number of Sections Summarized

School

Statistics(a)

School

N	Valid	72
	Missing	0
Mean		1.00
Median		1.00
Mode		1
Std. Deviation		.000
Minimum		1
Maximum		1

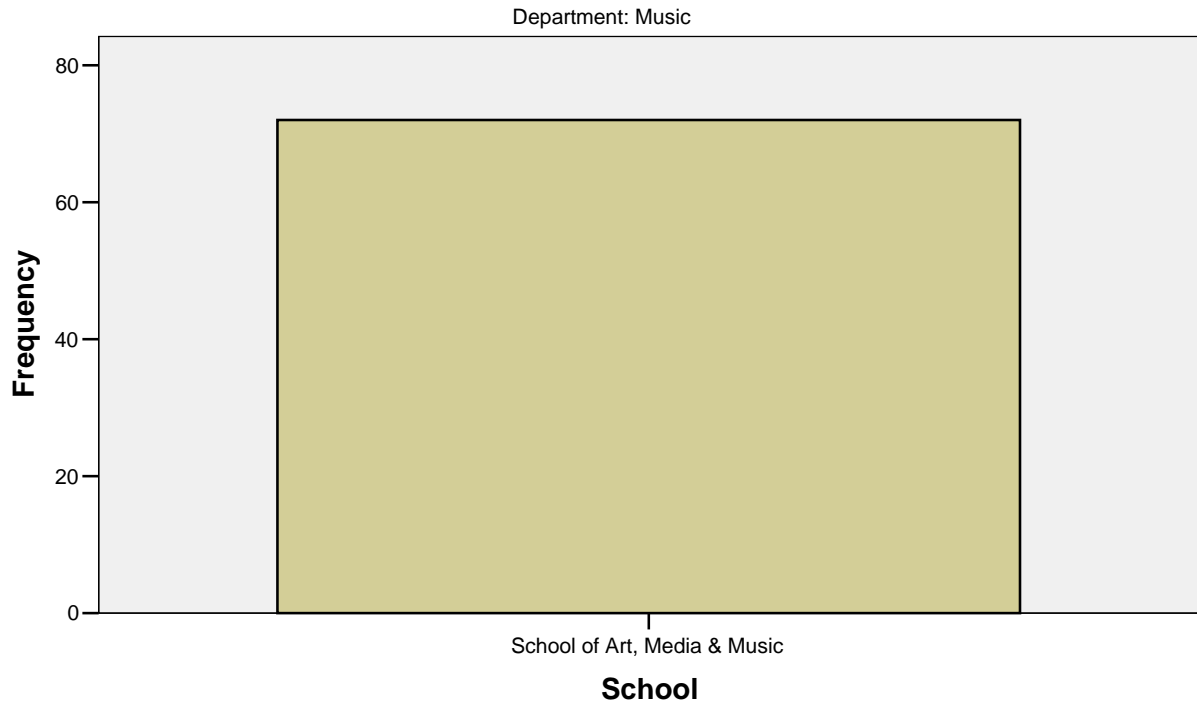
a Department = Music

School(a)

	Frequency	Percent	Valid Percent	Cumulative Percent
Valid School of Art, Media & Music	72	100.0	100.0	100.0

a Department = Music

School



Cases weighted by Number of Sections Summarized

Department

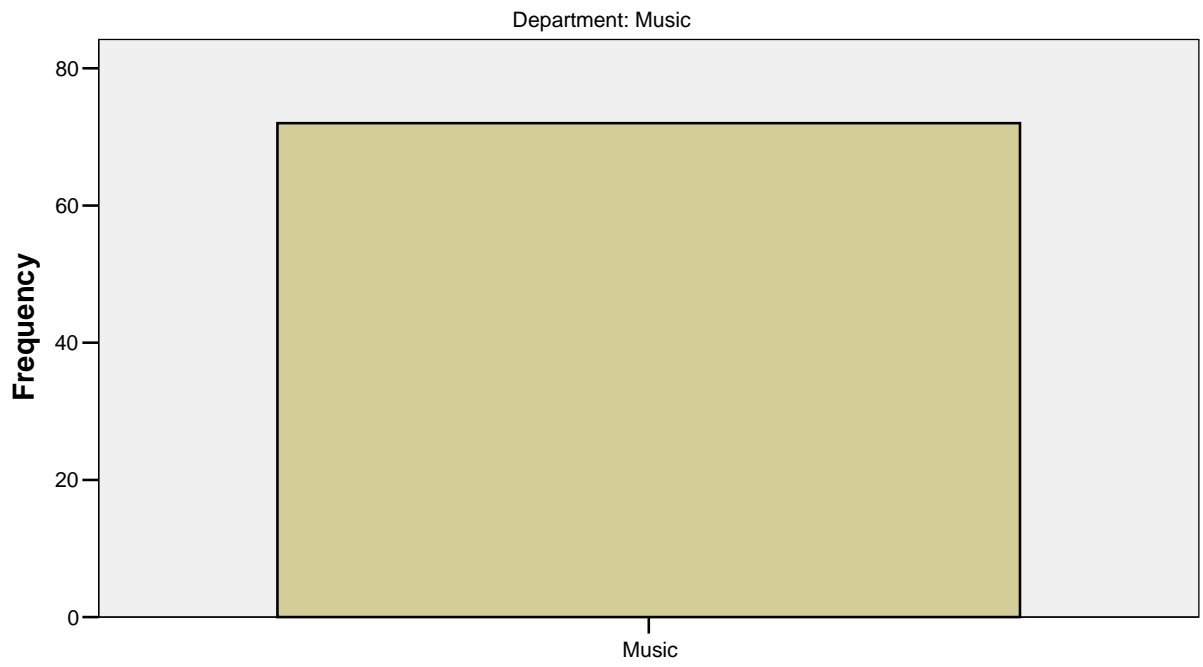
Statistics(a)

Department

N	Valid	72
	Missing	0
Mean		3.00
Median		3.00
Mode		3
Std. Deviation		.000
Minimum		3
Maximum		3

a Department = Music

Department



Department

Cases weighted by Number of Sections Summarized