

Jim's Baseline:



Checking Your Answers Algebra I

DIRECTIONS: The following are questions with solutions to these questions. Read the question answer. Decide first if the answer makes sense, explain why or why not, or how else you were determine if the answer was correct or not. Then if the answer is incorrect find the problem at it in the solution. Please make sure to write how you decided how to find the spot where the error occurred and how you corrected it.

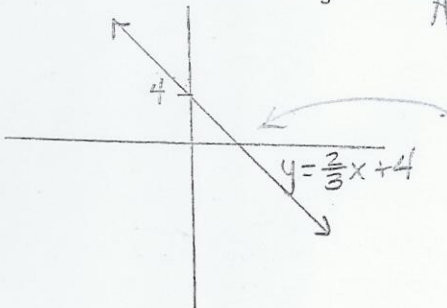
1. Find the average of the following numbers: 23, 45, 16, 34, 26, 23, 15, 31, 40, 11.

245
40
34
31
26
23
23
16
15
11
54

$$\text{average} = \frac{23 + 45 + 16 + 34 + 26 + 23 + 31 + 40 + 11}{10} = \boxed{50}$$

No it isn't correct because $254 \div 10$ doesn't equal 50, I added the numbers and automatically realized it was wrong

2. Graph the equation $y = \frac{2}{3}x + 4$



Answer is right?
with a positive or negative slope?

3. Solve $-2(2x-3)+6 < 12$

$$\begin{aligned} -2(2x-3)+6 &< 12 \\ -4x+6+6 &< 12 \\ -4x &< 0 \end{aligned}$$

Wrong he did not add the two 6s which was visible as soon as you read his answer.

$$-2(2x-3)+6 < 12$$