

Joan's Baseline

Checking Your Answers Algebra I

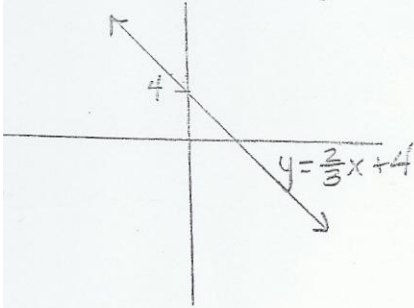
DIRECTIONS: The following are questions with solutions to these questions. Read the question and answer. Decide first if the answer makes sense, explain why or why not, or how else you were able to determine if the answer was correct or not. Then if the answer is incorrect find the problem and correct it in the solution. Please make sure to write how you decided how to find the spot where the error occurred and how you corrected it.

1. Find the average of the following numbers: 23, 45, 16, 34, 26, 23, 15, 31, 40, 11.

$$\text{average} = \frac{23 + 45 + 16 + 34 + 26 + 23 + 31 + 40 + 11}{10} = \boxed{50}$$

wrong, there are 10 numbers, they forgot to add one to the equation that makes it wrong.
The answer is 264, all added up is 264 divided by 10.

2. Graph the equation $y = \frac{2}{3}x + 4$



* correct because the y-intercept is 4, which makes it (0, 4) and that is plotted on the graph.

3. Solve $-2(2x-3)+6 < 12$

$$\begin{aligned} -2(2x-3)+6 &< 12 \\ -4x+6+6 &< 12 \\ -4x &< 2 \\ x &< -\frac{1}{2} \end{aligned}$$

wrong,

$$\begin{aligned} -2(2x+3)+6 &< 12 \\ -4x+6+6 &< 12 \\ -4x+12 &< 12 \\ -4x &< 0 \\ x &< 0 \end{aligned}$$

at which + combined terms which