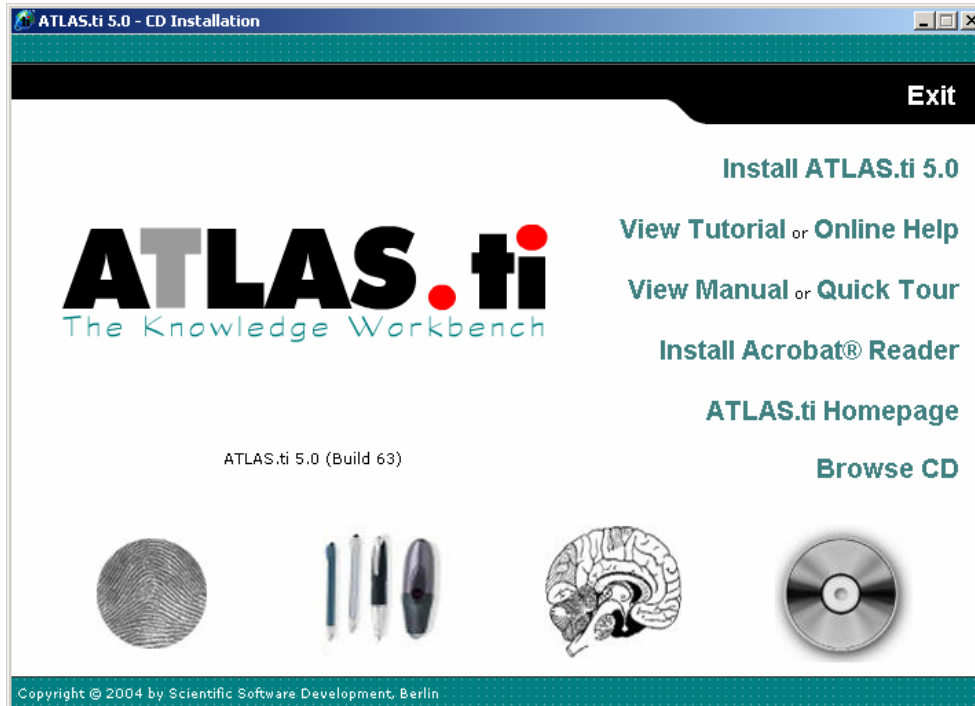


ATLAS.ti Home Use Installation

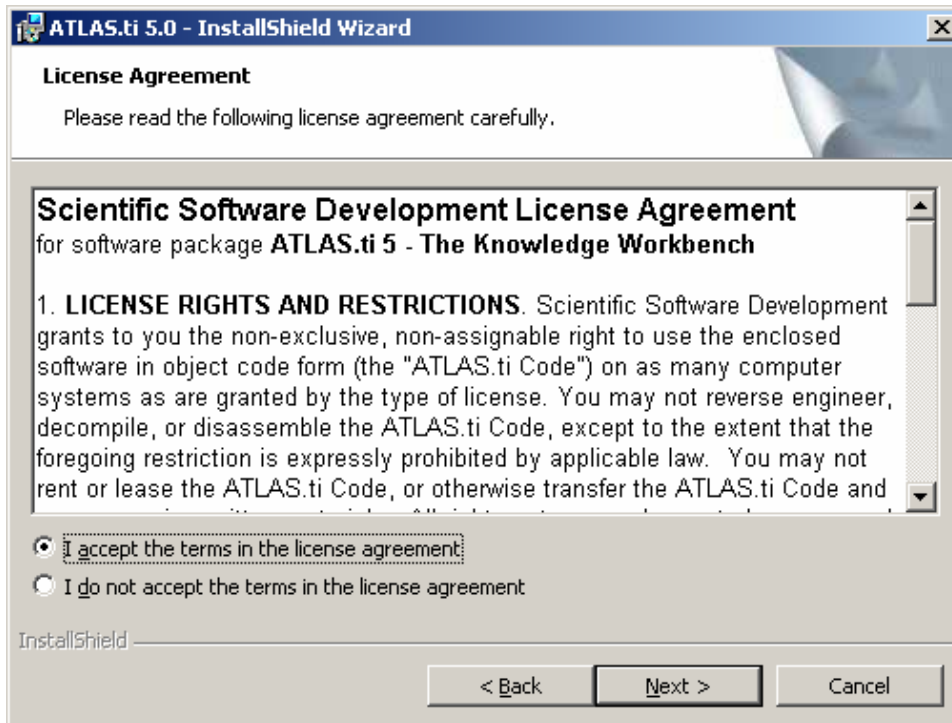
- 1) Insert the ATLAS.ti cd-rom and select "Install ATLAS.ti 5.0"



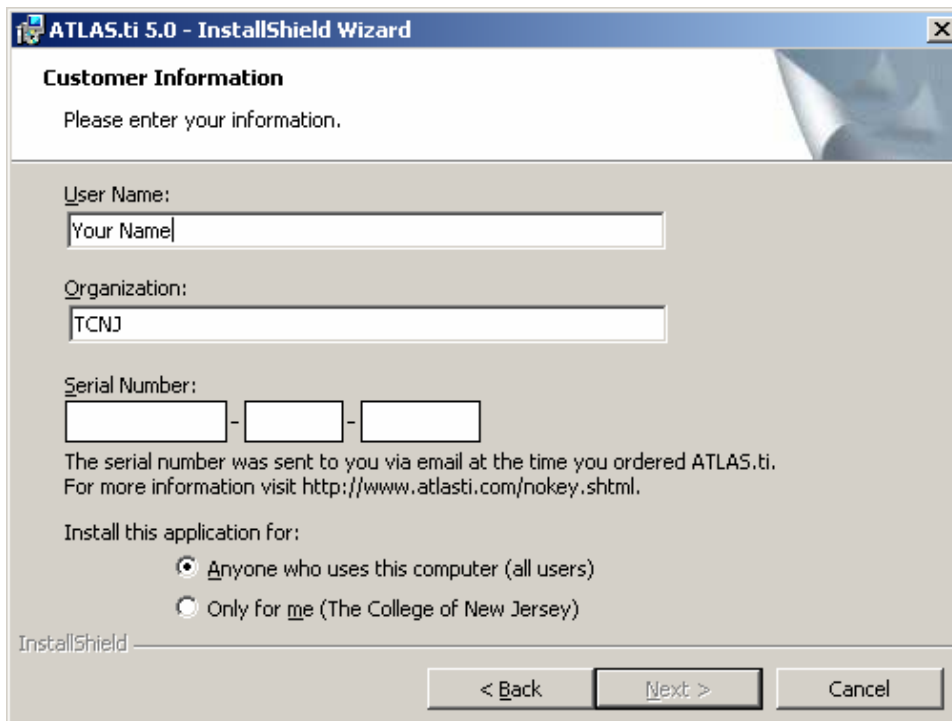
- 2) Select "Next"



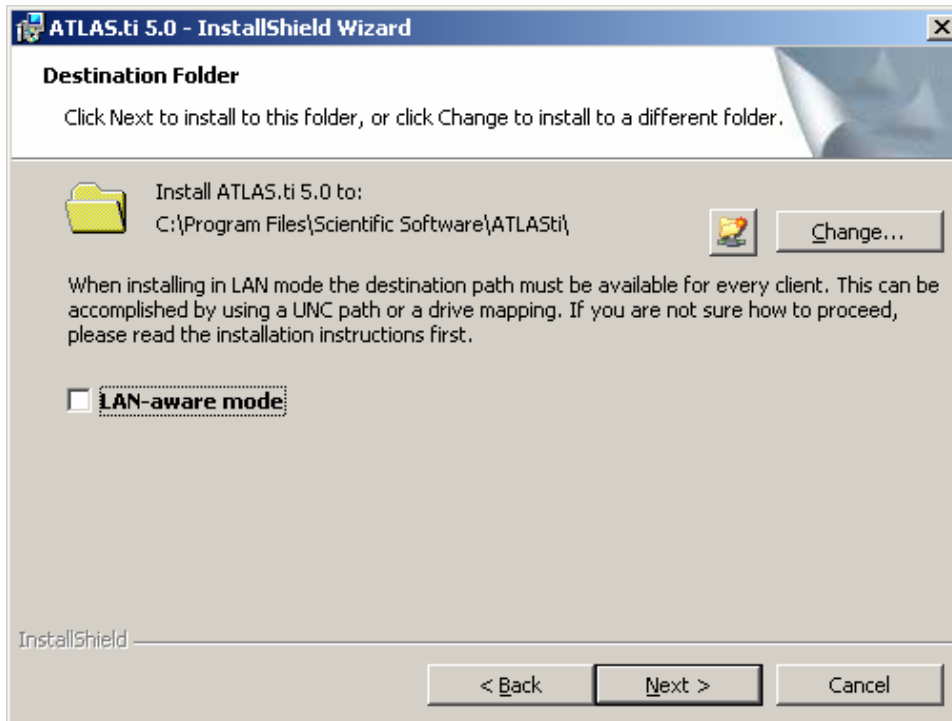
- 3) Select the “I accept the terms in the license agreement” radio button and click “Next”



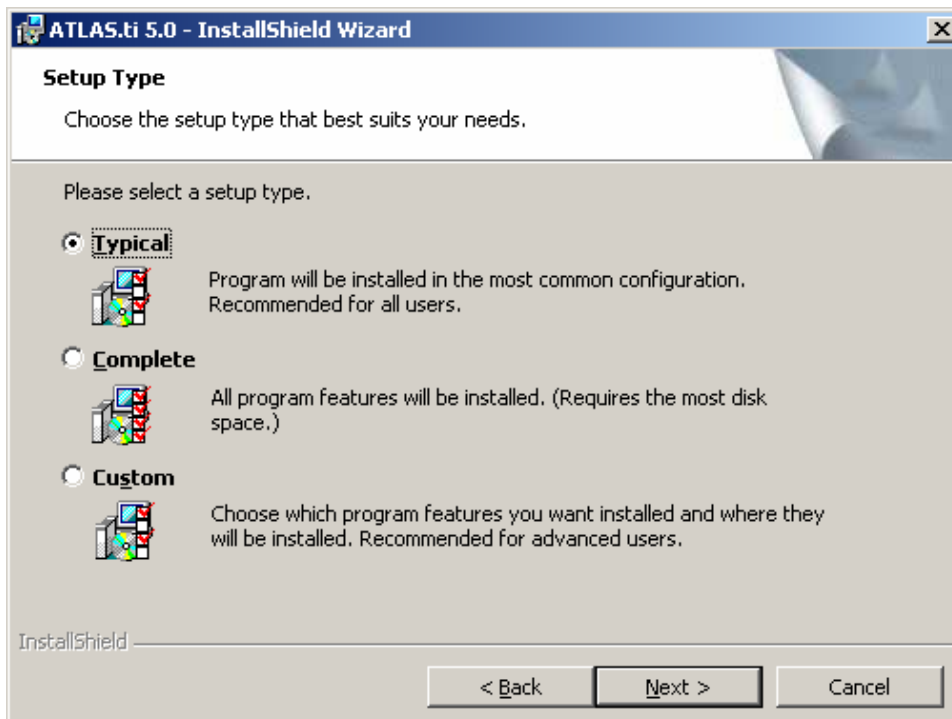
- 4) Fill in your name, TCNJ, and the serial number from the CD label and click “Next”



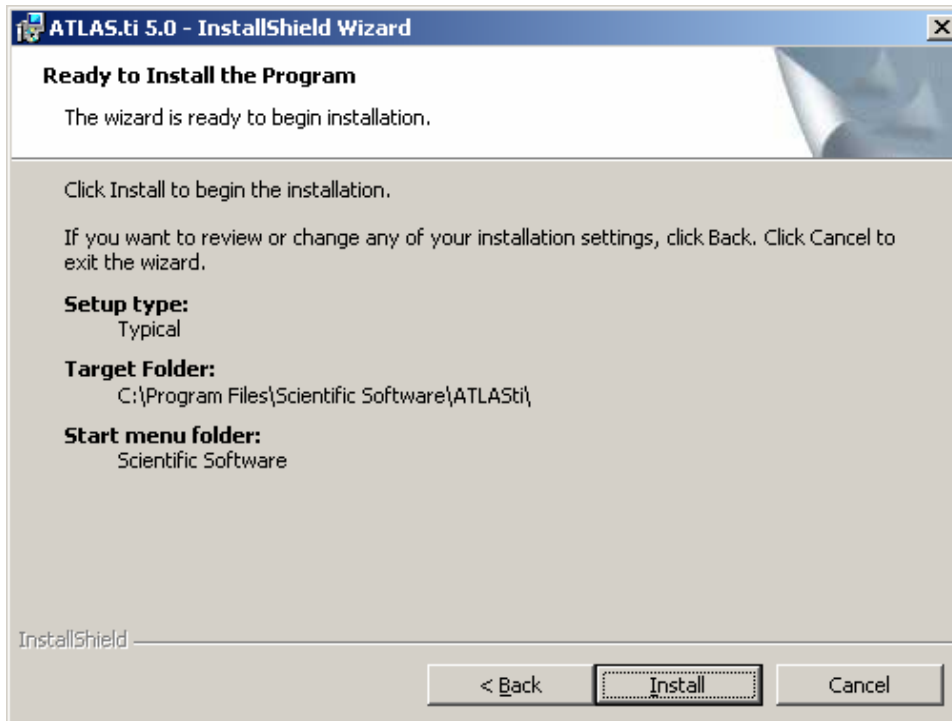
5) Uncheck “Lan-aware mode”, and click “Next”



6) Select “Typical” and then click “Next”



7) Verify the information the click “Install”



8) Select “Finish”

