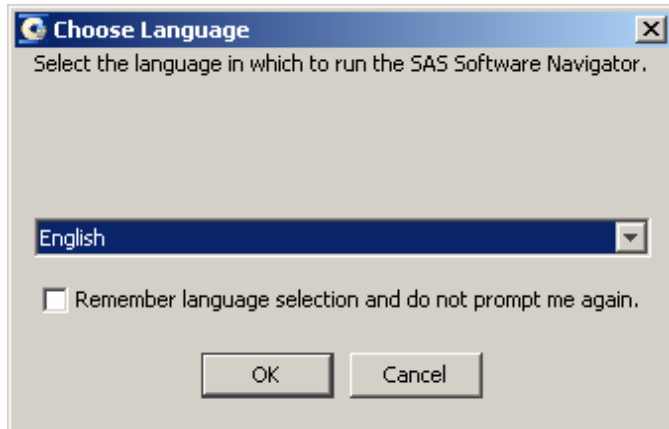
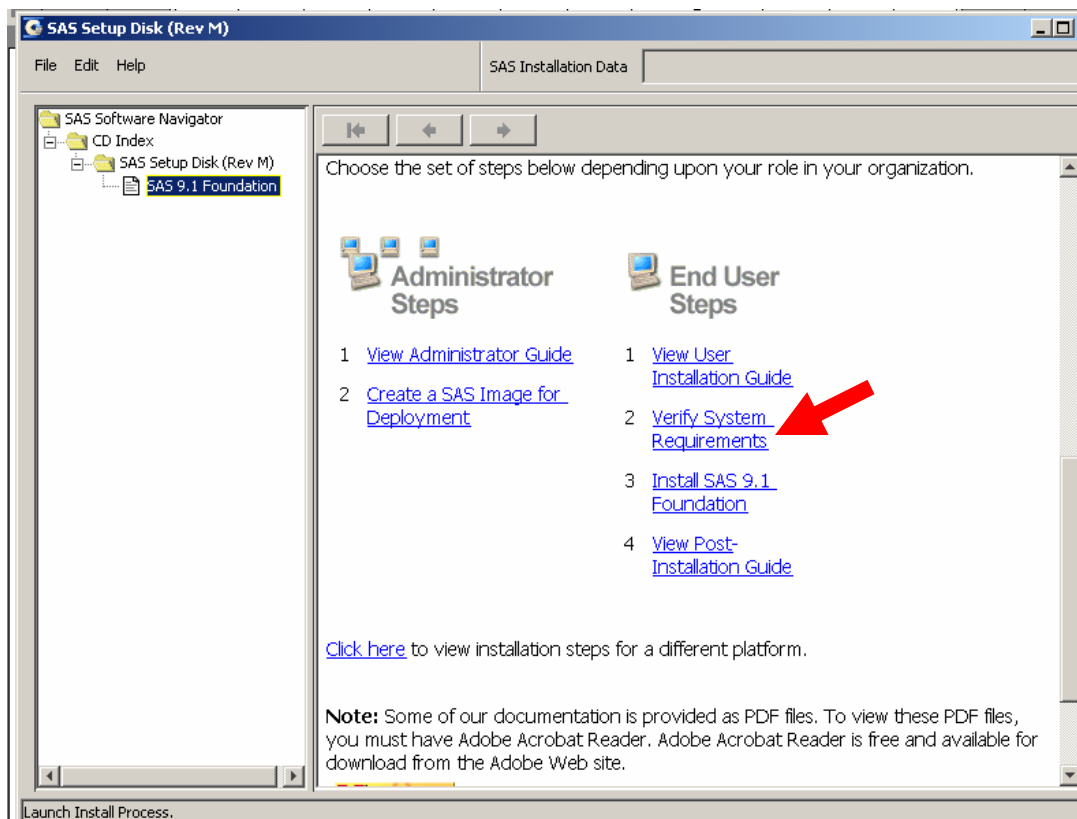


Installing SAS 9.1 at Home

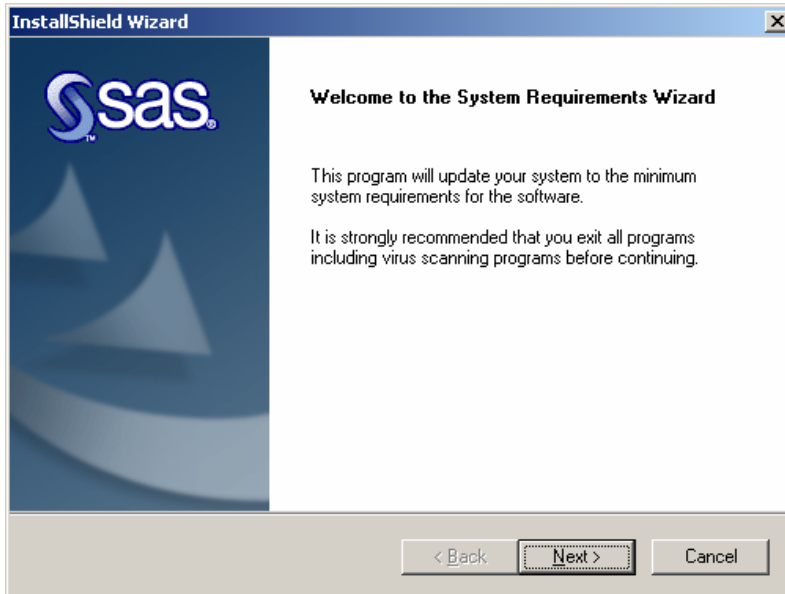
Step 1. Insert the “SAS Setup Disk” into your CD Drive, the following menu should appear...



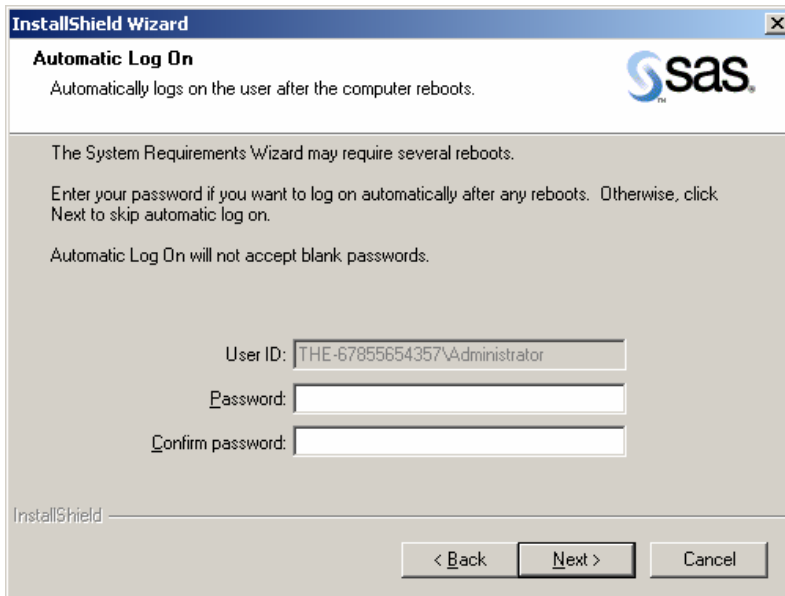
Step 2. From the Setup Menu, select the option to Verify System Requirements...



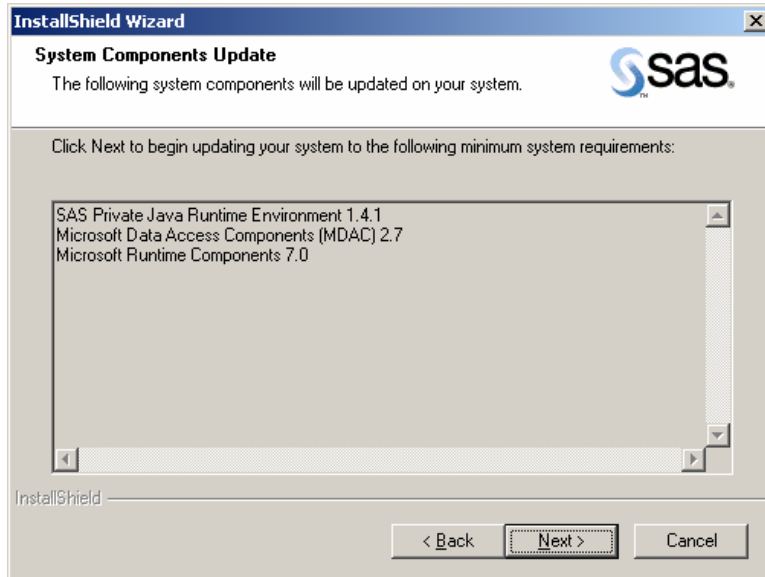
Step 3. Click Next to begin System Requirements Wizard.



Step 4. Leave these fields blank, click next.



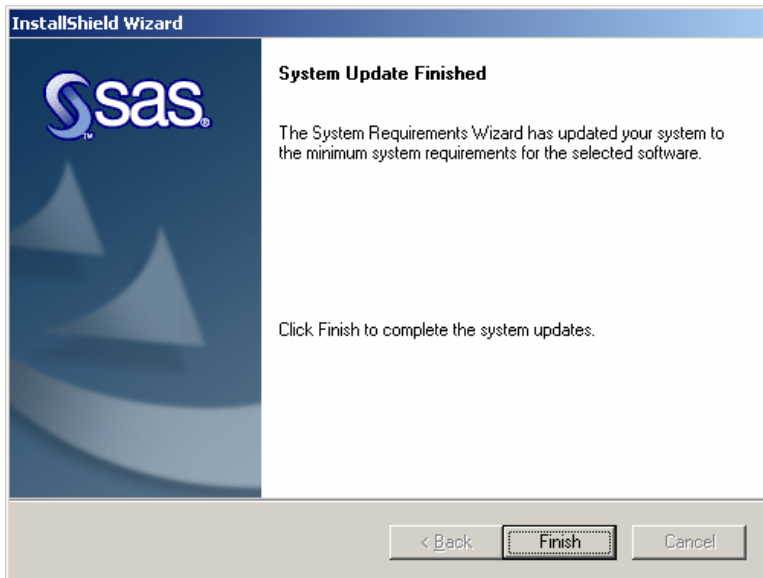
Step 5. Depending on how updated your computer is, SAS may find components it needs to update....



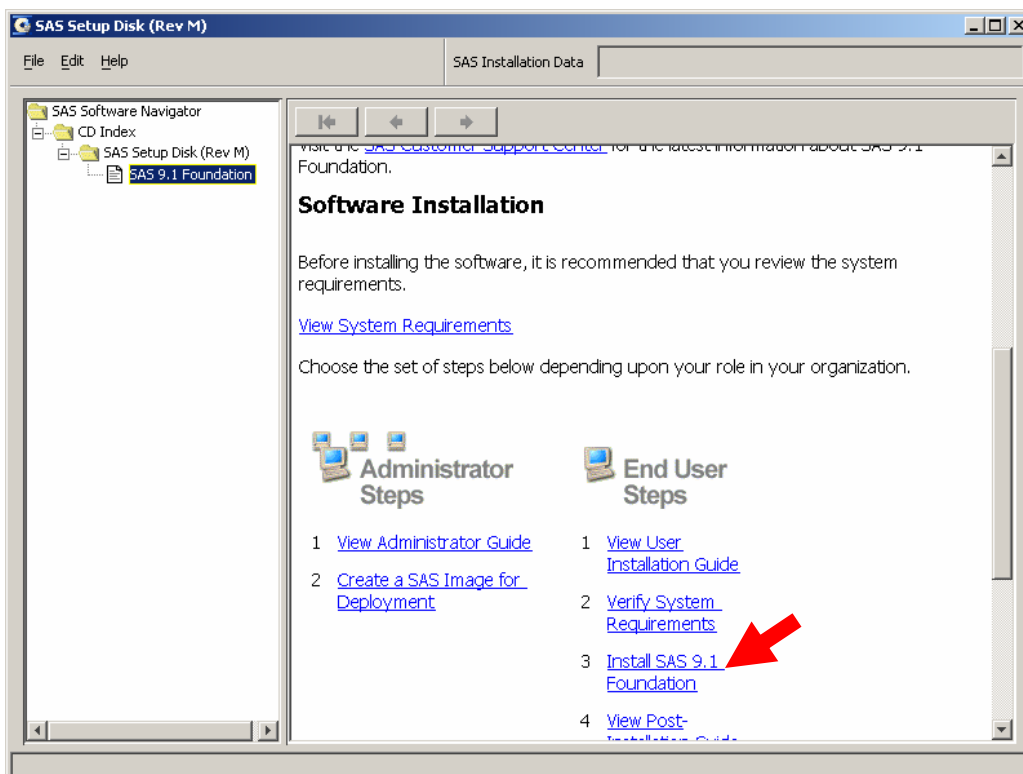
Step 6. Reboot your computer as necessary...



Step 7. When this window appears you are ready to install SAS 9.1!



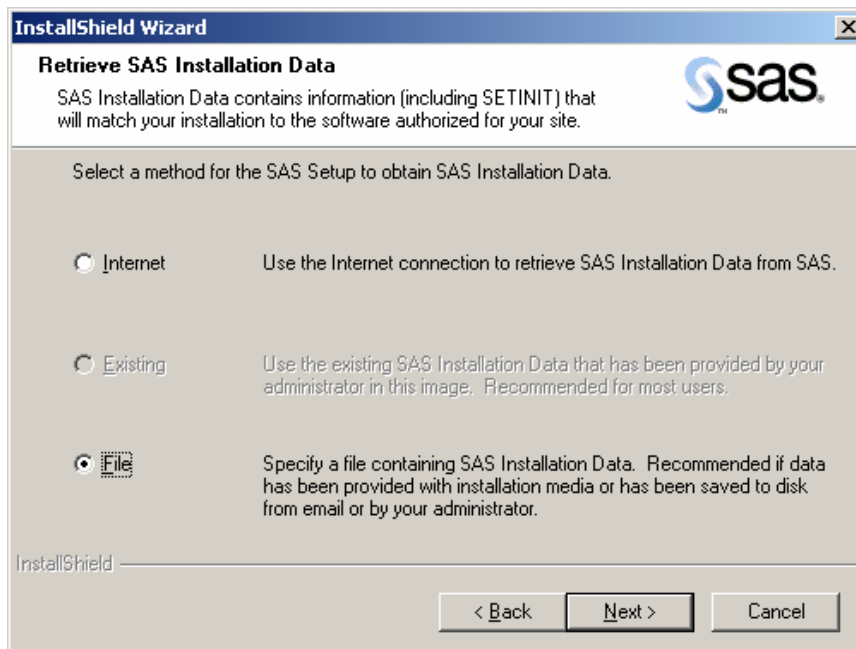
Step 8. Return to the Setup Menu and select "Install SAS 9.1 Foundation"



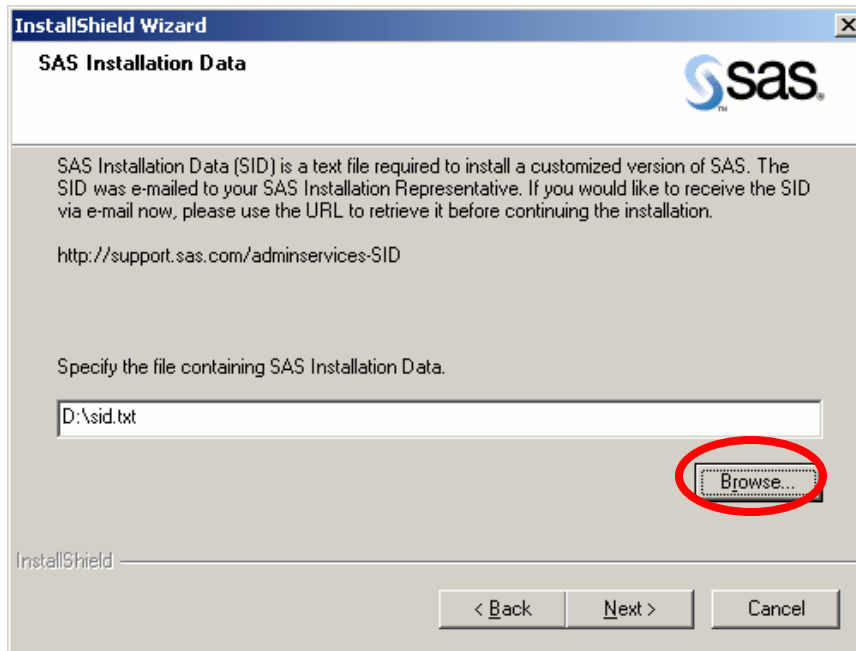
Step 9. Click Next to begin installation...



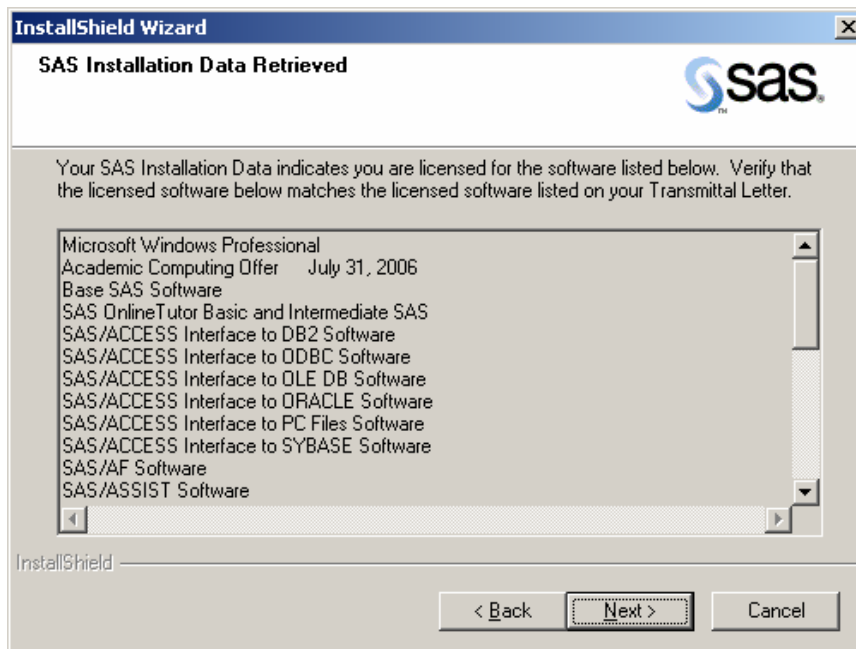
Step 10. Choose the File option and click Next.



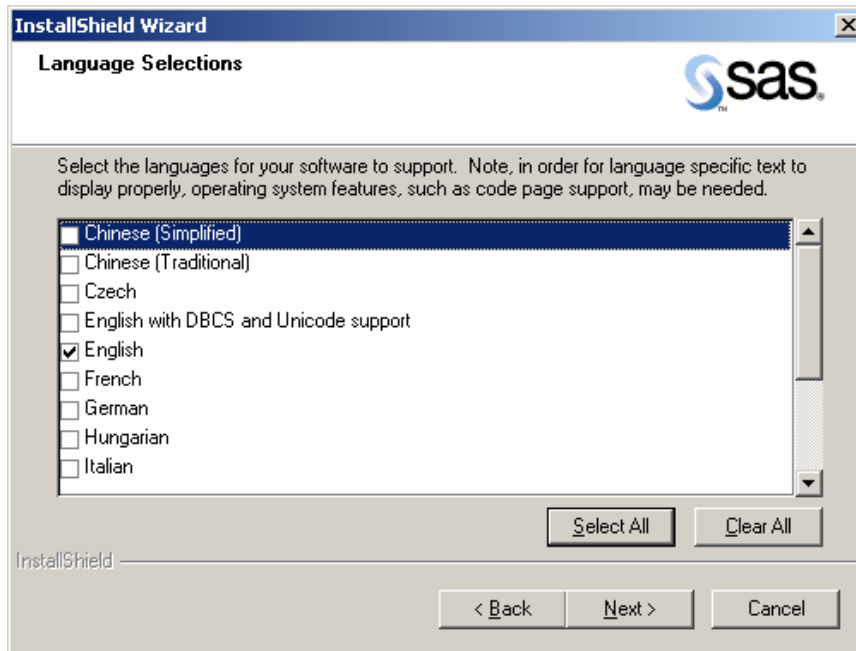
Step 11. Browse to the CD drive and select "sid.txt" then click Next.



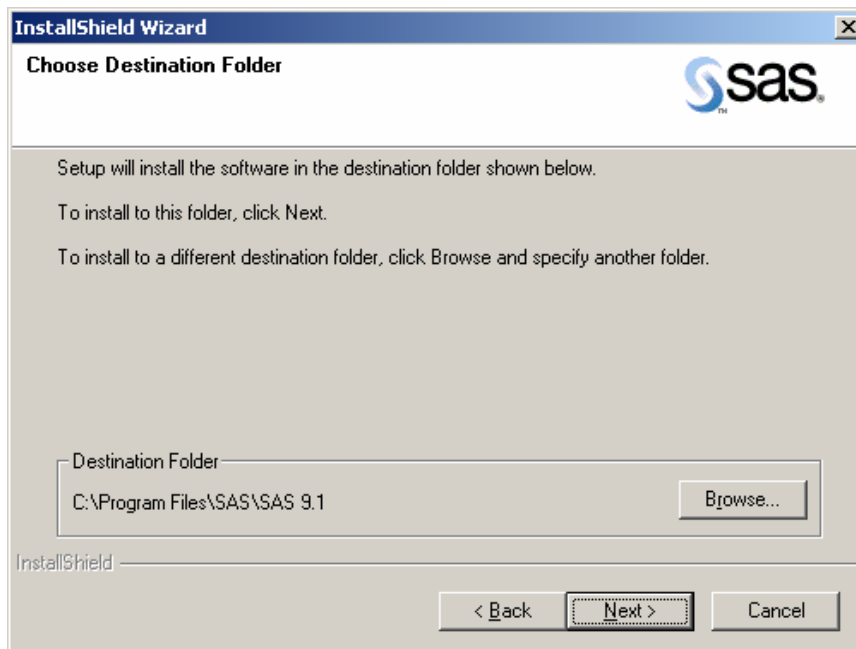
Step 12. If successful, the following screen should appear...



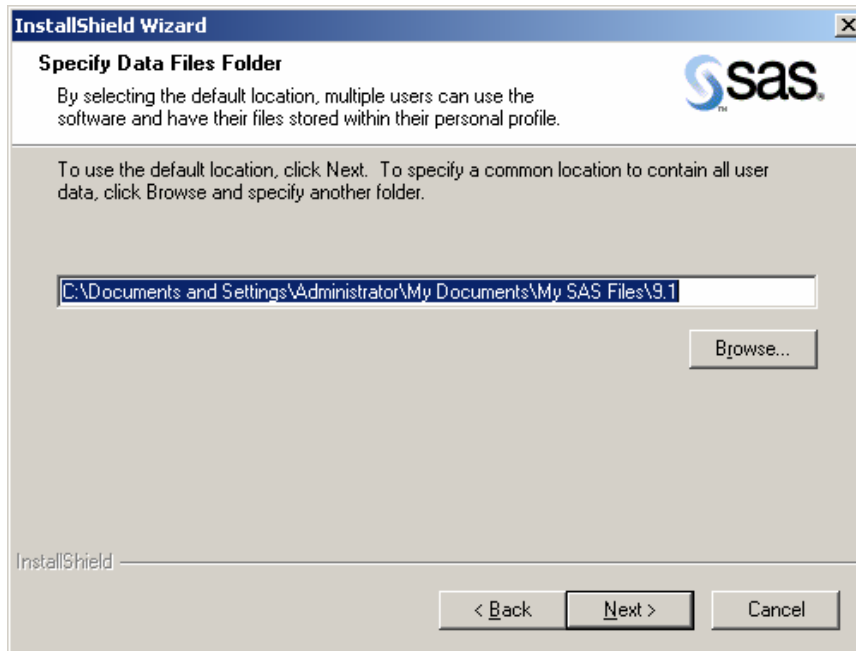
Step 13. Choose your installation language...



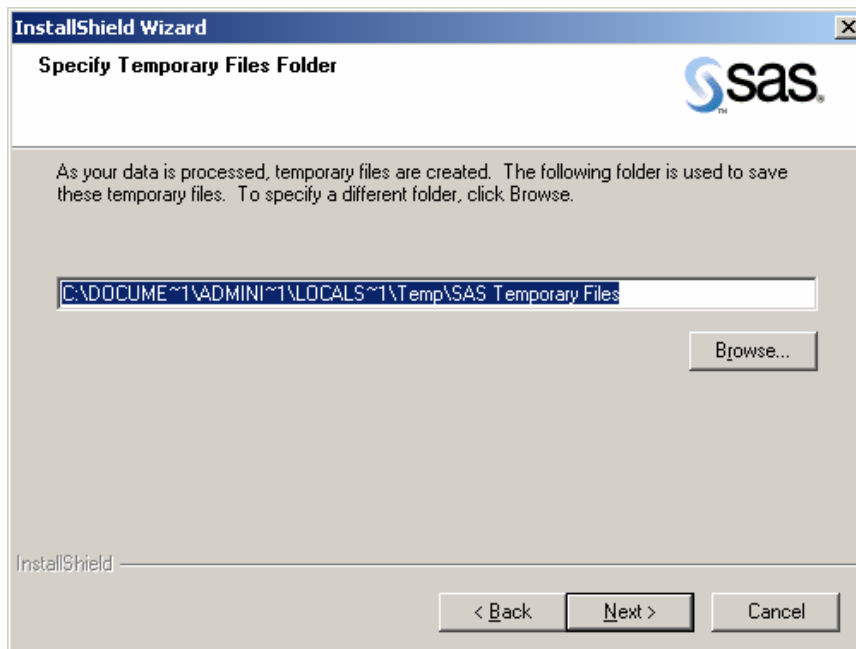
Step 14. Choose your destination folder, the default is recommended.



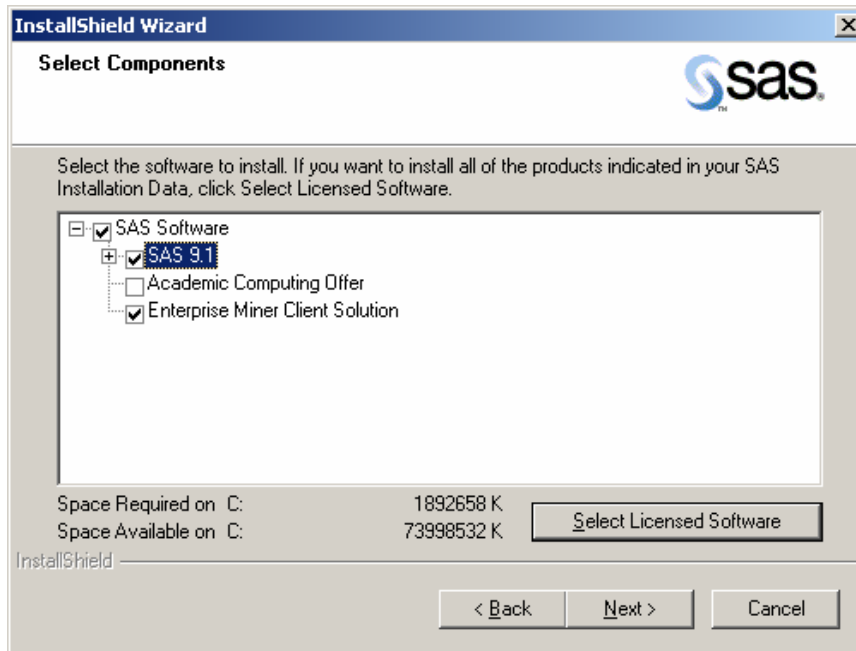
Step 15. Choose the default location where your work will be saved.



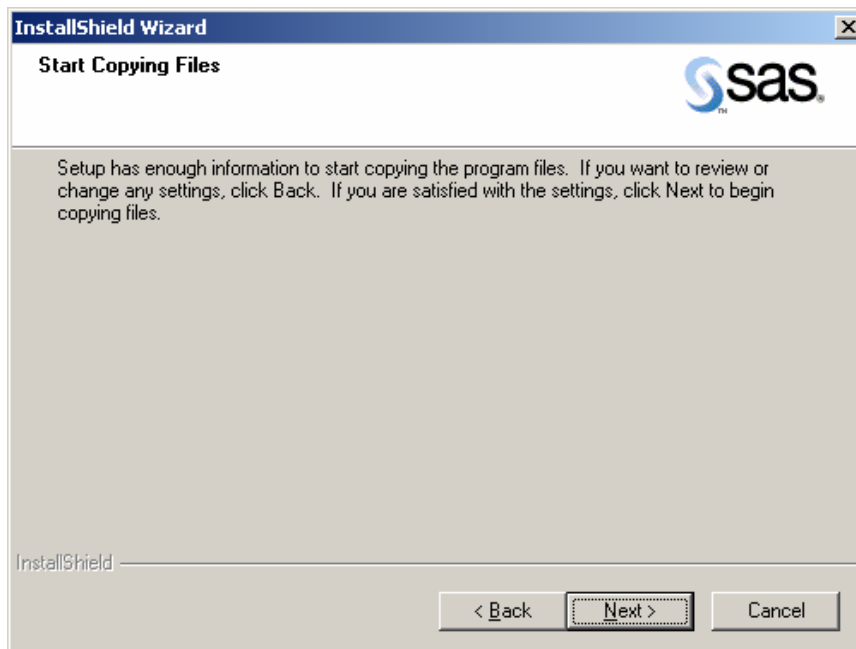
Step 16. Click next to continue...



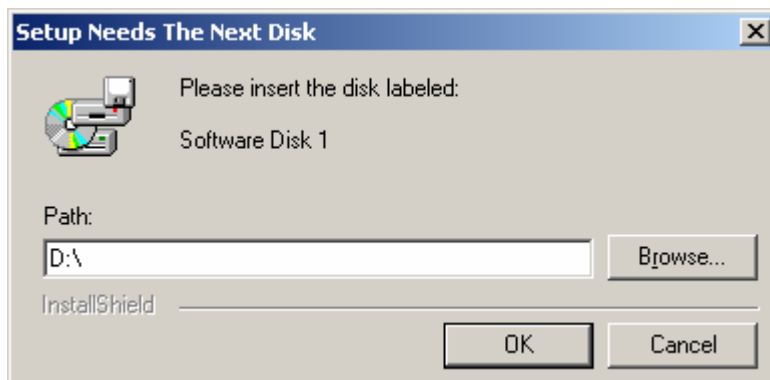
Step 17. Check the boxes as seen below and click next.



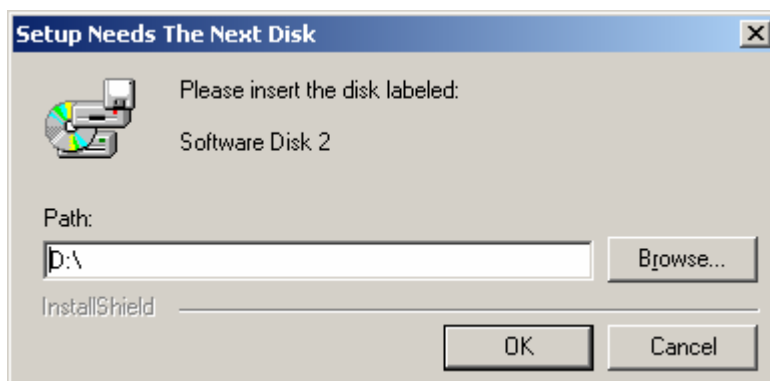
Step 18. Click next to begin.



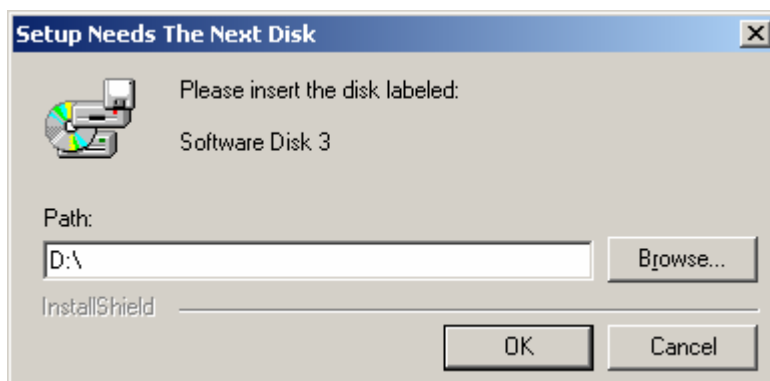
Step 19. Insert Software Disk 1.



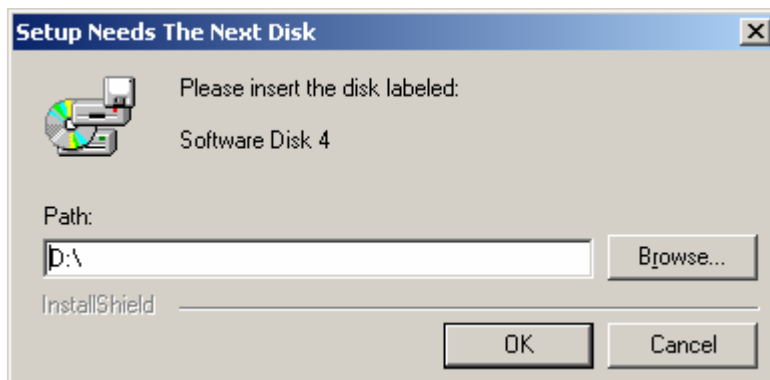
Step 20. Insert Software Disk 2.



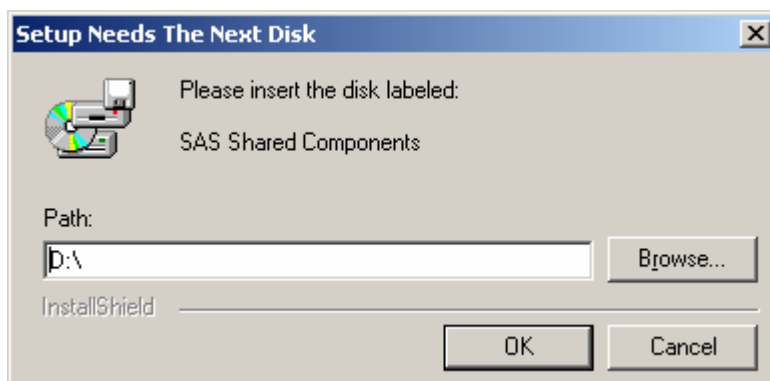
Step 21. Insert Software Disk 3.



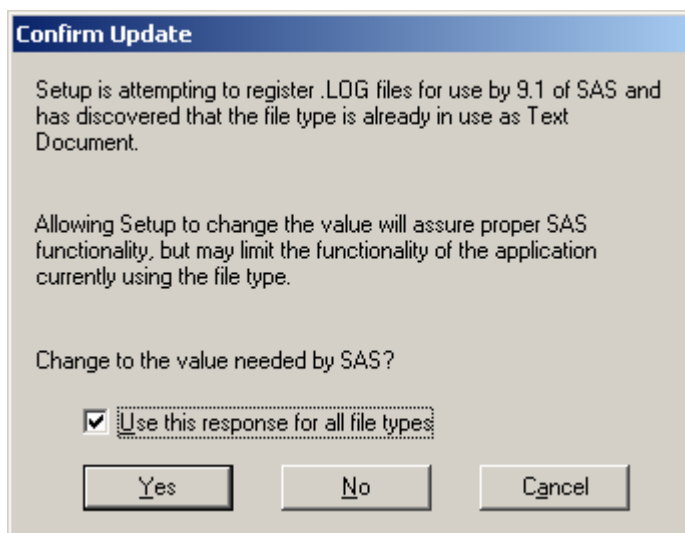
Step 22. Insert Software Disk 4.



Step 23. Insert SAS Shared Components Disk.



Step 24. If prompted, click yes to associate file type with SAS.



Step 25. SAS has been successfully setup! Please remember to promptly return your disks to ITS in Library Room 004.

