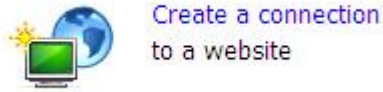


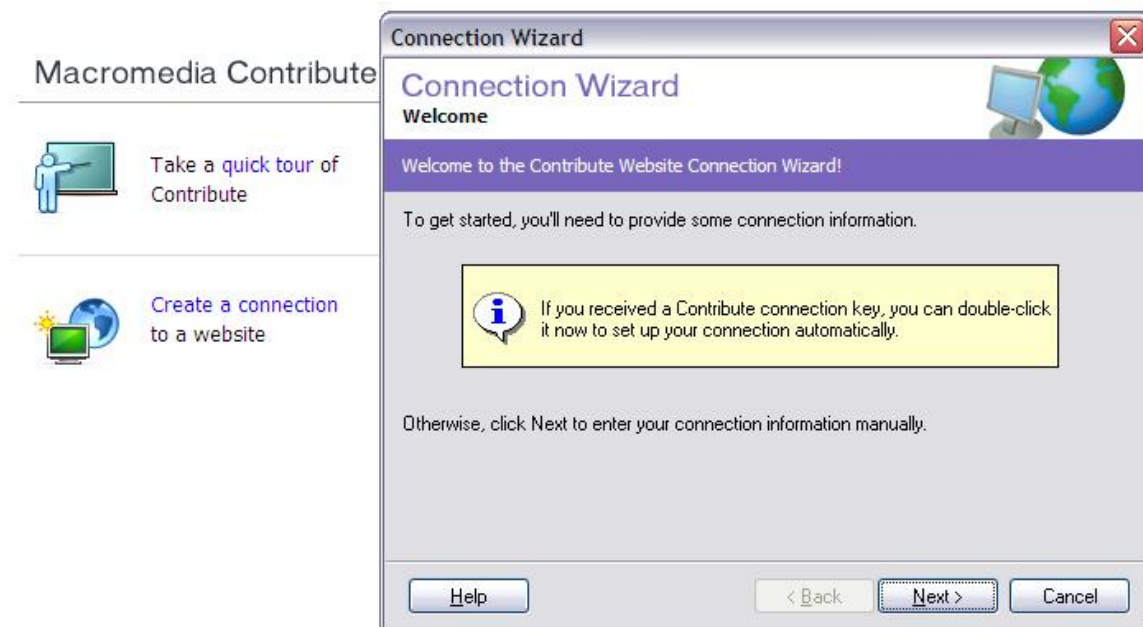
Macromedia Contribute Connection Wizard Tutorial for TCNJ Users

1. Click on "Create a connection" to launch the connection wizard.



Create a connection
to a website

2. Click on "Next" to enter connection information.



Macromedia Contribute



Take a [quick tour](#) of
Contribute

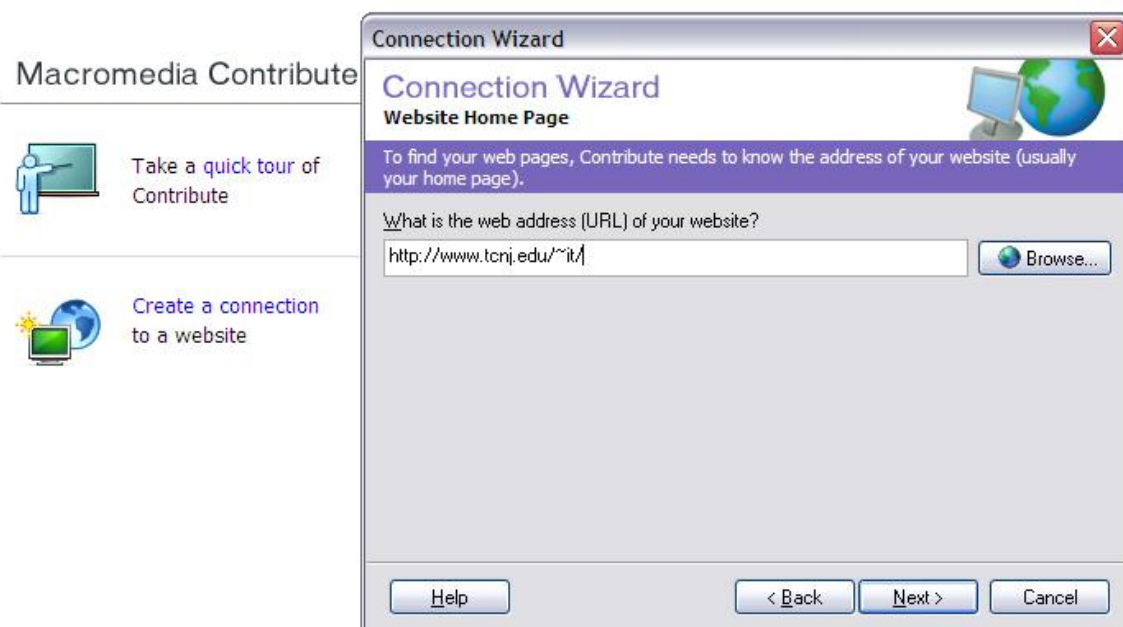


Create a [connection](#)
to a website

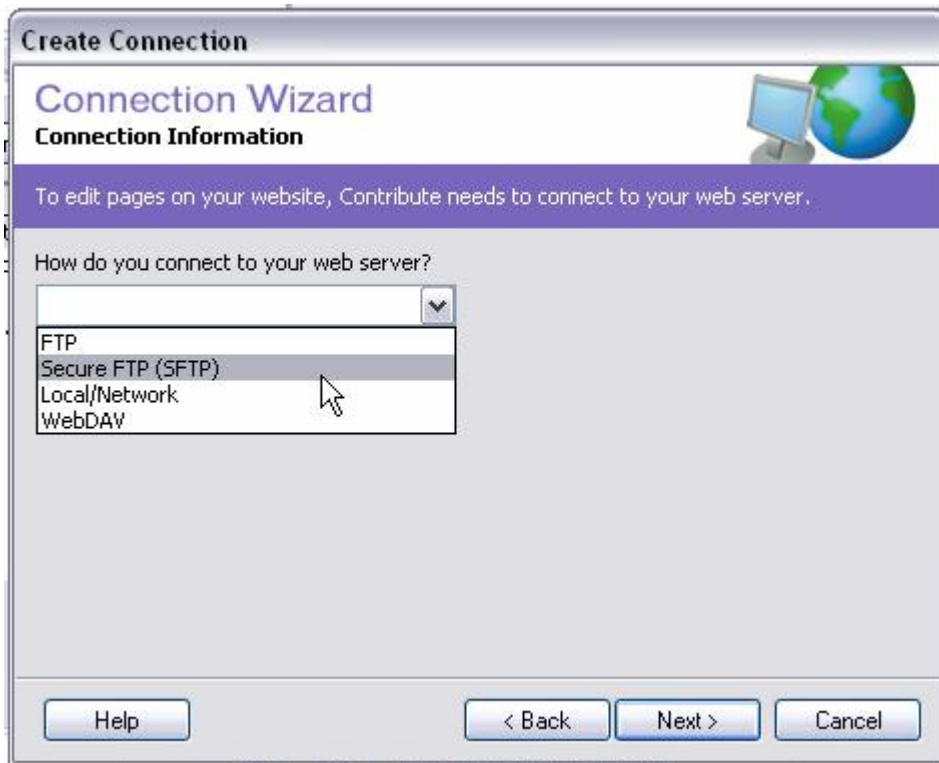
3. Enter your name and email address and click "Next."



4. Enter your web address and click "Next."



5. Select Secure FTP (SFTP) and click "Next."



6.) Enter name of SFTP server "beast.tcnj.edu" SFTP username and password and click "Next."



Select "Users" and click "Next."

Macromedia Contribute

Take a quick tour of Contribute

Create a connection to a website

Connection Wizard

Group Information

To determine which pages you're allowed to edit, Contribute needs to know which group you belong to. For assistance, contact the administrator: winkelm@tcnj.edu.

What group do you belong to?


- Administrator
- Users**


Group description:
Members of this permission group are users of this website.

Help < Back Next > Cancel

7. Review info and click "Done."

Macromedia Contribute

 Take a quick tour of Contribute

 Create a connection to a website

Connection Wizard

Summary

Congratulations, Matthew Winkel! You can now use Contribute to edit pages on your website.

User Information
Name: Matthew Winkel
E-mail address: winkelm@tcnj.edu

Website Information
Address: http://www.tcnj.edu/~webtest2/

Connection Information
Type: FTP
Host: beast.tcnj.edu
Folder: /home/acct3/webtest2/www/
FTP Login: webtest2

Group Information
Group: Users - Members of this permission group are users of this website.