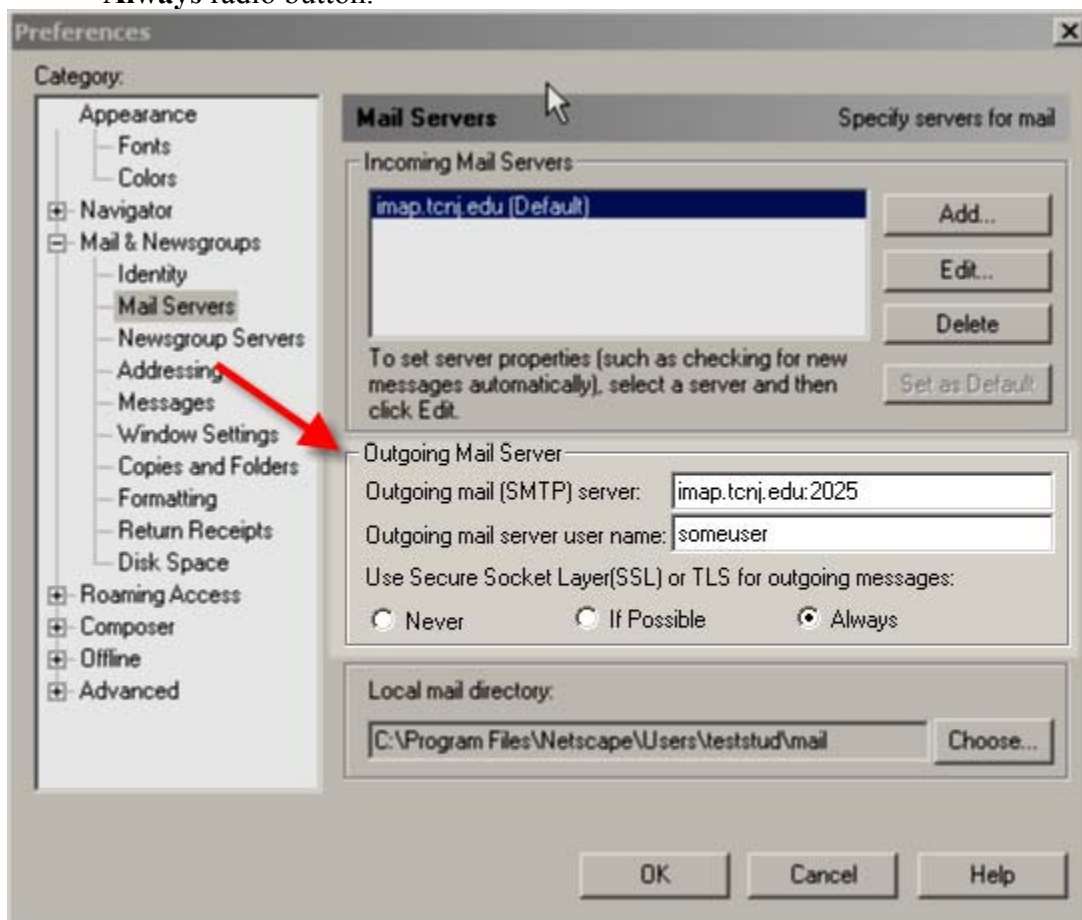


NTS Technical Bulletin – Netscape Messenger Using SSL/TLS

This document will describe the settings needed to enable SSL/TLS encryption between the Netscape Messenger client (Netscape 4.7x or 4.8) and the email server. This does not encrypt the contents of the message, just the transmission channel. Both the sending and receiving of email as well as any passwords used to access the email server will be encrypted using SSL/TLS encryption (similar to how a web server works when using HTTPS).

- Start your Netscape client and access the Messenger email client portion.
- Go to the menu bar and choose **Edit | Properties...**
- If necessary click the + sign next to **Mail & Newsgroups** to display the enclosed options.
- Select the **Mail Servers** option from the expanded list.
- In the **Outgoing Mail Server** section, modify the **Outgoing mail (SMTP) server** to be **imap.tcnj.edu:2025**
- Make sure the **Outgoing mail server user name** is the same as your email login name.
- For the **Use Secure Socket Layer(SSL) or TLS for outgoing messages** option select the **Always** radio button.



NTS Technical Bulletin – Netscape Messenger Using SSL/TLS

These settings will enable you to send email via the TCNJ email server no matter what ISP (e.g. Comcast, Optimum, AOL) you are using. When you send your first message during an email session, it may prompt you for your password. This is so the SMTP server can verify that you are a valid member of the campus community and to accept your message.

Now we will configure the settings so that reading email from the server is also encrypted.

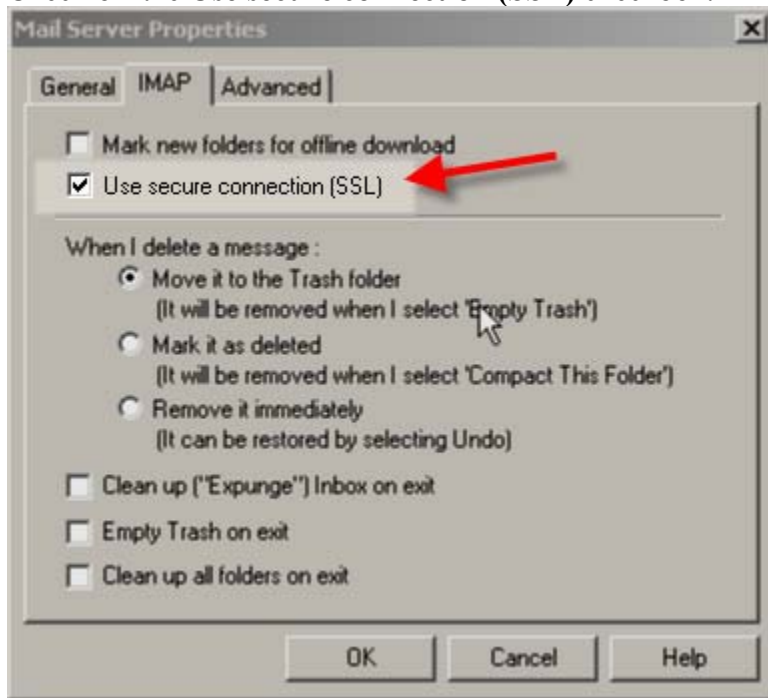
It is assumed that you are still at the Mail Server window from the previous instructions. If not, navigate back to that screen (see the previous screenshot).

Select the college server in the **Incoming Mail Servers** listbox. It may be the only one listed (e.g. imap.tcnj.edu).

Click the **Edit...** button next to the listbox.

A new window will pop-up. Select the **IMAP** tab.

Check off the **Use secure connection (SSL)** checkbox.



Click the **OK** button to close the window.

Click the **OK** button again to close the Preferences window.

You may want to close all Netscape windows and restart Netscape Messenger.

Now any communication with the email server should be encrypted.