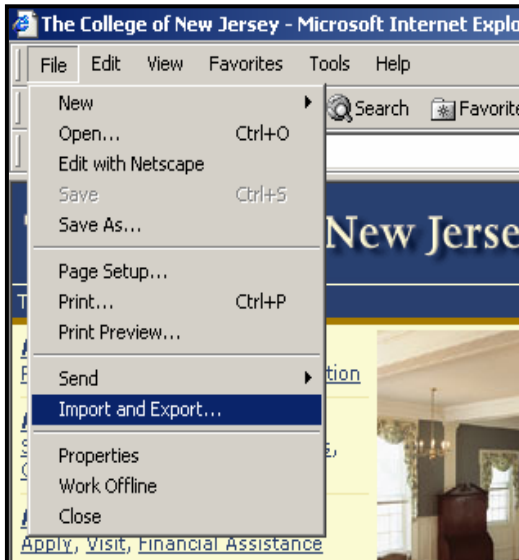


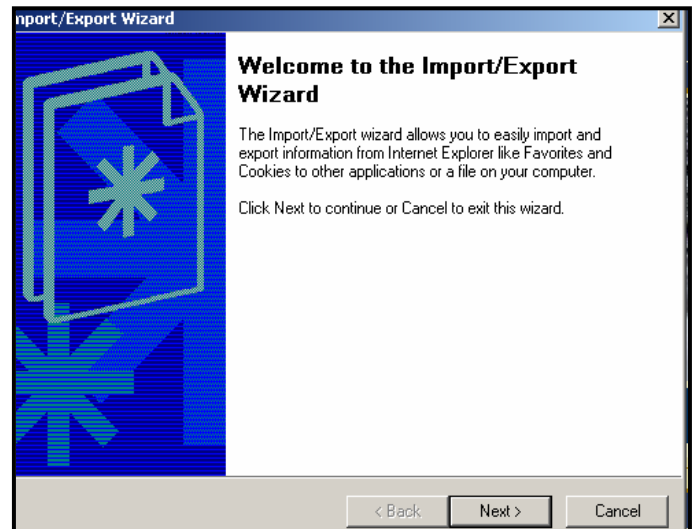
How to Copy Netscape Bookmarks to Internet Explorer

To copy your Netscape Bookmarks to Internet Explorer, use the *Import Utility* in Internet Explorer.

- 1) Open Internet Explorer. Go to *File>Import and Export*
- 2) A **Welcome to the Import/Export Wizard** appears. Click *Next*.

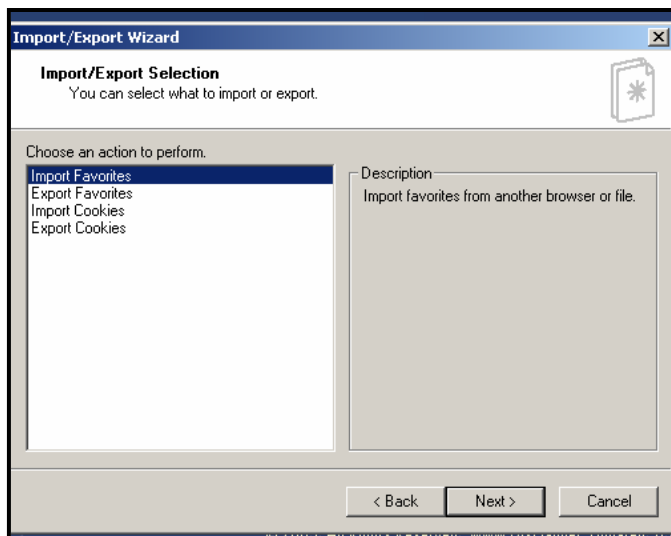


1

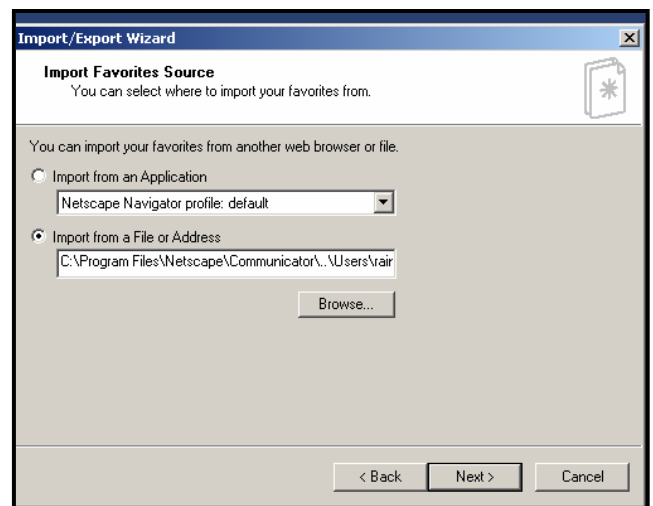


2

- 3) On the **Import/Export Selection** screen, choose *Import Favorites*. Click *Next*.
- 4) On the **Import Favorites Source**, click on *Import from a File or Address*. Make sure the path reads: *C:\Program Files\Netscape\Communicator\..Users\YOUR E-MAIL ID\bookmark.htm*. (For example, in this example, the E-mail ID is *Rainey*. Choose *Next*.



3



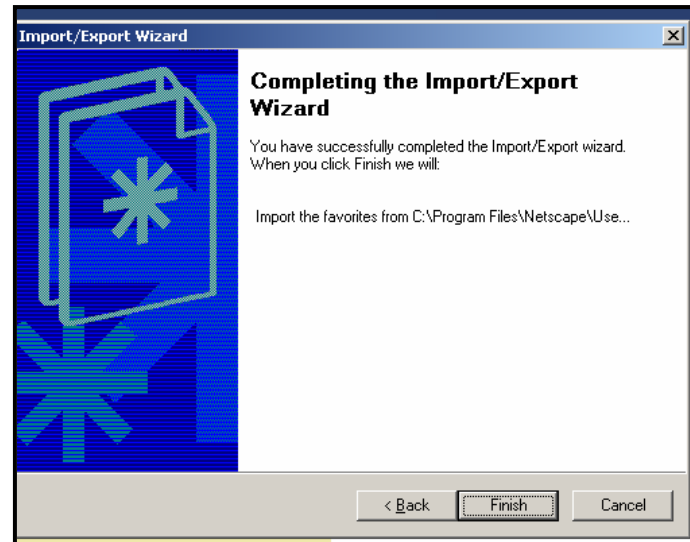
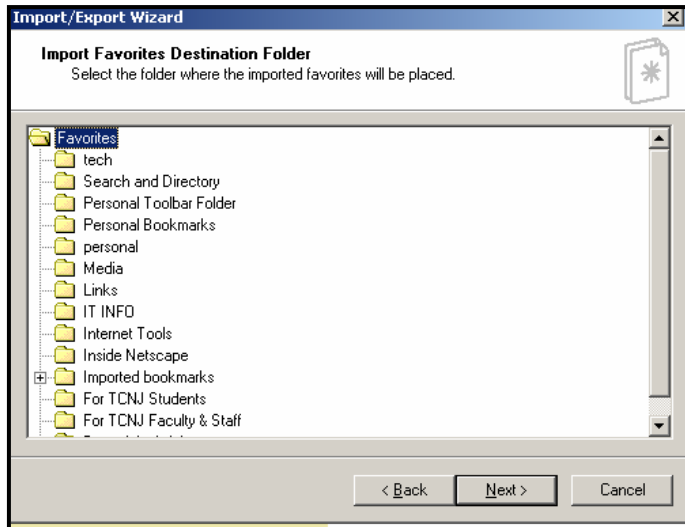
4

5) On the **Import Favorites Destination Folder**, highlight *Favorites*. Choose *Next*.

6) On the **Completing the Import/Export**, choose *Finish*.

5

6



When you go to Internet Explorer, you will see all these bookmarks are now listed as *favorites*.